



GETEK

- NETWORKING SOLUTION
- FIBER SOLUTION
- TELECOMMUNICATION
- TEL / USB / HDMI
- TOOL



GETEK

NINGBO GETEK ENTERPRISE CO.,LTD.
Add:Rm 701, No.1 BLDG ShangDong International
Mansion, No.1926 CangHai Road, Ningbo,China.
Tel:+86-574-87394399 87394391
Fax:+86-574-87895695
Http://www.getek.cn
E-mail: getek@getek.cn nancy@ge-tek.com



Version:7

COMPANY INTRODUCTION

Ningbo Getek Enterprise Co., Ltd (abbreviation: GETEK) is a manufactory and trading company, who is located in Ningbo city of eastern china, which is advanced in economic, convenient in transportation-one of biggest ports in china. GETEK is specialized in the products for Networking solution and fiber solution; also trading for Telecommunication products, tools and so on. GETEK's products are widely exported to markets in Europe, America, South America area; the Middle East and Southeast Asia etc. and enjoy high reputation in international market.

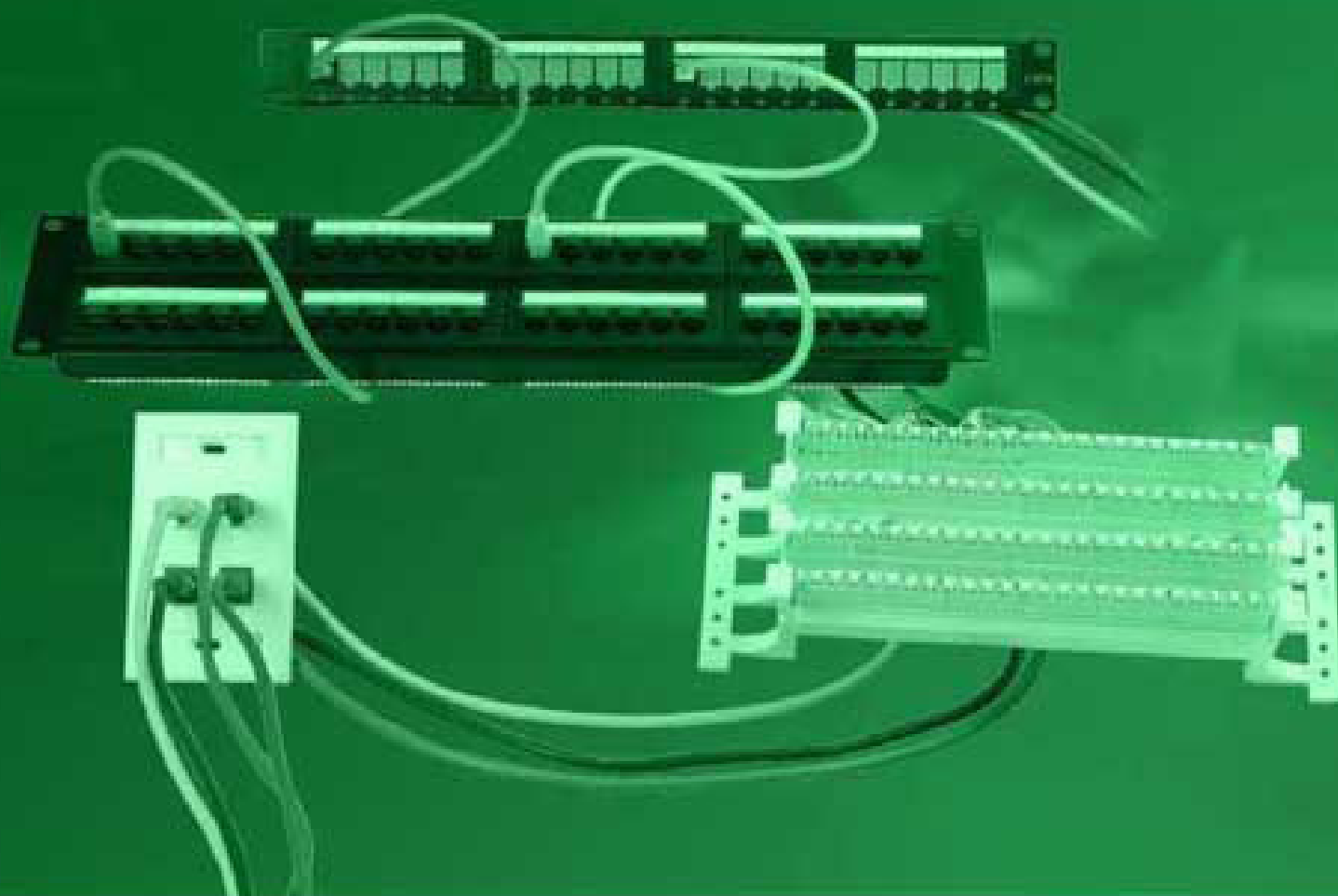
To meet all customers' requests, GETEK will abide by the following rules: go-aheadism, honest-cooperating, top-quality, low-price and good-service. To face the future, GETEK will use "create value, the pursuit of excellence" as our belief, sticking to the path of development quality and efficiency. We believe we can create a better future with our old and fresh friends.



Content



NETWORKING SOLUTION



- Verified to exceed ANSI/TIA/EIA-568-B.2 component specifications.
- Confirmed contact performance over full range of (FCC spec) deflection limits.
- Minimum contact force loogtams with FCC compliant 8-position plug.
- Contacts material: phosphor bronze with tin plating over nickle under plating.
- Accommodates AWG 22--26.
- Certified by CE, UL, ETL, 3P.



QUALITY-PRODUCTS
UNDER PROFESSIONAL

EXCELLENT NETWORKING SOLUTION

KEYSTONE JACK

Order Information:

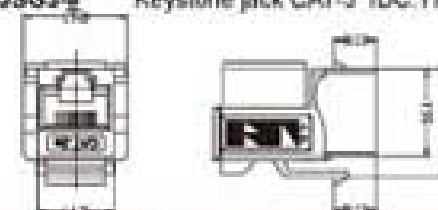
*[E]=Color: (W=white,B=black,BL=blue,I=ivory,Y=yellow,O=orange,GR=green,R=red).

*Gold plating: 50U / 30U / 15U / 6U / 3U is optional

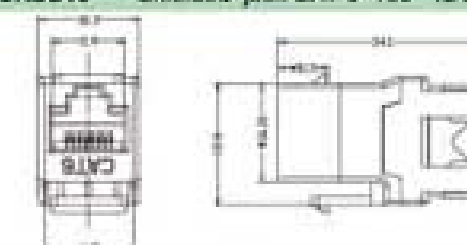
Part No.	Description
NKJRS6-[E]	Keystone jack CAT-6 IDC: Dual
NKJRS5-[E]	Keystone jack CAT-5e IDC: Dual
NKJRSS6	Shielded keystone jack CAT-6, IDC: Dual
NKJRSS5	Shielded Keystone jack CAT-5e IDC: Dual



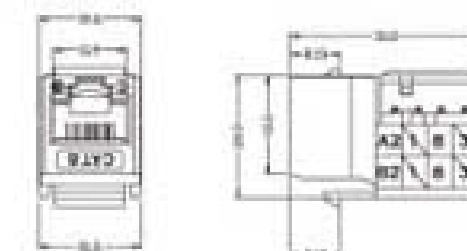
Part No.	Description
NKJSG6-[E]	Keystone jack CAT-6 IDC: 110
NKJSG5-[E]	Keystone jack CAT-5e IDC: 110
NKJSGS5	Shielded keystone jack, CAT-5e IDC: 110
NKJSGS6	Shielded keystone jack, CAT-6 IDC: 110
NKJSG3-[E]	Keystone jack CAT-3 IDC: 110



Part No.	Description
NKJRS16-[E]	Keystone jack CAT-6 180° IDC: Dual
NKJRS15-[E]	Keystone jack CAT-5e 180° IDC: Dual
NKJRSS15	Shielded jack CAT-5e 180° IDC: Dual
NKJRSS16	Shielded jack CAT-6 180° IDC: Dual



Part No.	Description
NKJBP6P-[E]	Keystone jack CAT-6, IDC: Dual



Page 11



Page 57



NEW



KEYSTONE JACK

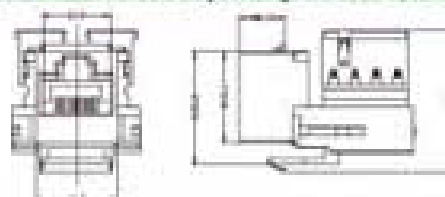
■Order Information:

*Gold plating: 50U / 30U / 15U / 6U / 3U is optional

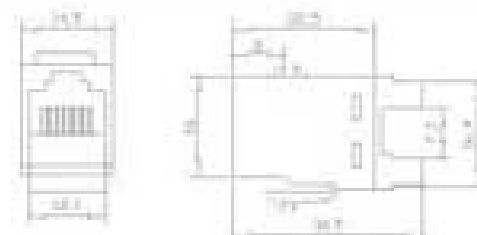
**#*=Color. (W=white; B=black; BL=blue; I=ivory; Y=yellow; O=orange; GR=green; R=red).



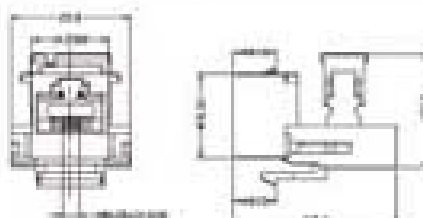
Part No.	Description
NKJAP5-#	Keystone jack CAT-5e, IDC:110
NKJAP6-#	Keystone jack CAT-6, IDC:110
NKJAP5S	Shielded keystone jack CAT-5e, IDC:110
NKJAP6S	Shielded keystone jack CAT-6, IDC:110



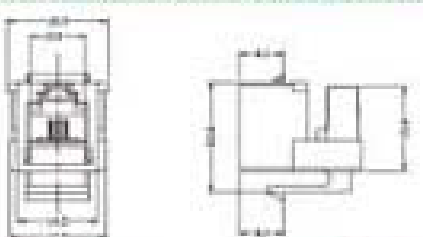
Part No.	Description
NKJAP15-#	Keystone jack CAT-6,180°, IDC: Dual



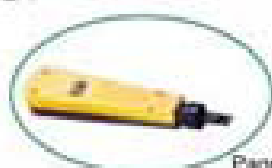
Part No.	Description
NKJAP3-#	Keystone jack CAT-3 8P4C, IDC:110
NKJAP3C-#	Keystone jack CAT-3 8P4C, IDC:110
NKJAP3S-#	Keystone jack CAT-3 8P4C, IDC:



Part No.	Description
NKJMN3-1-#	Mini keystone jack CAT 3 4P4C, IDC:110
NKJMN3-K-#	Mini keystone jack CAT-3, 4P4C, IDC: krone



Page 11



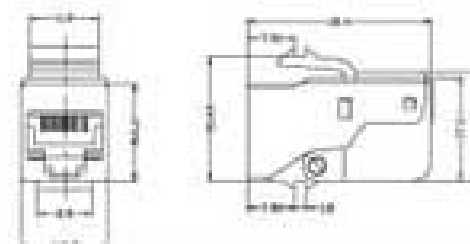
Page 07

■Order Information:

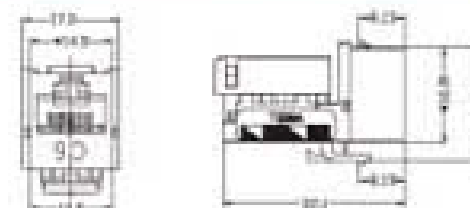
*Gold plating: 50U / 30U / 15U / 6U / 3U is optional

**#*=Color. (W=white; B=black; BL=blue; I=ivory; Y=yellow; O=orange; GR=green; R=red).

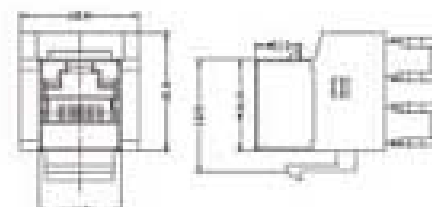
Part No.	Description
NKJAPTL5-#	Keystone jack CAT-5e tool-less.
NKJAPTL3-#	Keystone jack CAT-3 tool-less.



Part No.	Description
NKJHB5-#	Keystone jack CAT-6, IDC:110
NKJHB5-#	Keystone jack CAT-5e, IDC:110



Part No.	Description
NKJH5-#	Keystone jack CAT-5e,180°, IDC: Krone
NKJH5S	Half-shielded keystone jack CAT-5e, 180°



Part No.	Description
NKJTL5-#	Keystone jack CAT-6 tool-less style
NKJTL5-#	Keystone jack CAT-5e tool-less style
NKJTL3-#	Keystone jack CAT-3 tool-less style



Page 29



Page 12

KEYSTONE JACK





KEYSTONE JACK

■Order Information:

*Gold plating: 50U / 30U / 15U / 6U / 3U is optional

**C=Color. (W=white; B=black; BL=blue; I=ivory; Y=yellow; O=orange; GR=green; R=red).



NKJZ6A



NEW



NKJNX6-W



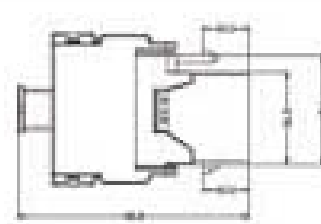
NKJCL16-B



NKJTL26-W

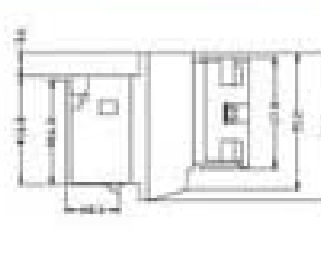
Part No.	Description
----------	-------------

NKJZ6A Shielded keystone jack CAT-6a, tool-less.



Part No.	Description
----------	-------------

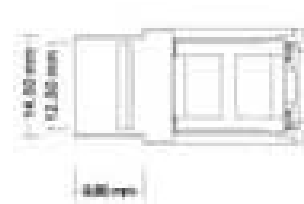
NKJNX6-C Keystone jack CAT-6, IDC: Dual



Part No.	Description
----------	-------------

NKJCL16-C Keystone jack CAT-6, IDC: 110

NKJTL26-C Keystone jack CAT-6, tool-less.



Part No.	Description
----------	-------------

NKJIR5-C Keystone jack CAT-5e tool-less.

NKJYH5-C Keystone jack CAT-5e tool-less.



Page 11



Page 07

■Order Information:

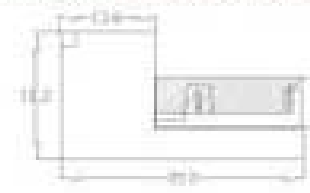
*Gold plating: 50U / 30U / 15U / 6U / 3U is optional

**C=Color. (W=white; B=black; BL=blue; I=ivory; Y=yellow; O=orange; GR=green; R=red).

Part No.	Description
----------	-------------

NKJPD5-C Keystone jack CAT-5e tool-less.

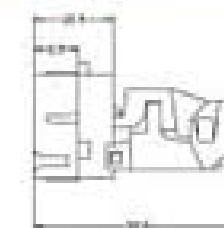
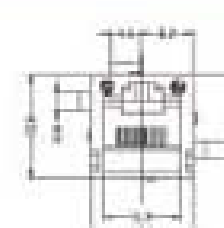
NKJPD55-C Shielded keystone jack CAT-5e tool-less.



Part No.	Description
----------	-------------

NKJID5-C Keystone jack CAT-5e tool-less.

NKJIDN5-C Keystone jack CAT-5e tool-less.

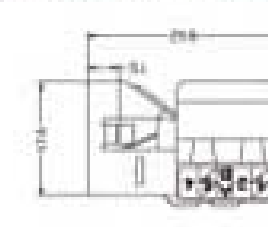
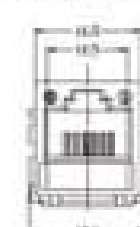


Part No.	Description
----------	-------------

NKJAV5-C Keystone jack CAT-5e, IDC: Dual

NKJAV6-C Keystone jack CAT-6, IDC: Dual

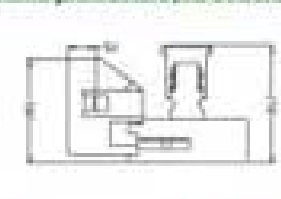
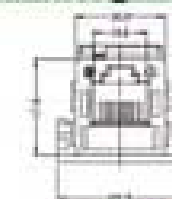
NKJAVS6 Shielded keystone jack CAT-6, IDC: Dual



Part No.	Description
----------	-------------

NKJAV3-C Keystone jack CAT-3, IDC: 110

NKJAV3S-C Keystone jack CAT-3, IDC: screw

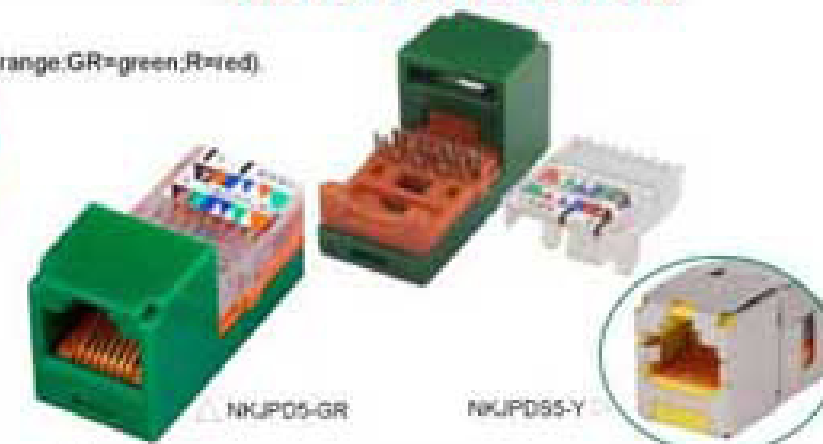


Page 29



Page 12

KEYSTONE JACK



NKJPD5-GR

NKJPD55-Y



NKJIDN5-B

NKJID5-W



NKJAV5-W

NKJAV5-W



NKJAV3-I

NKJAV3S-W



FACE PLATE



■Screw is covered by extra frame; Size:86X86mm

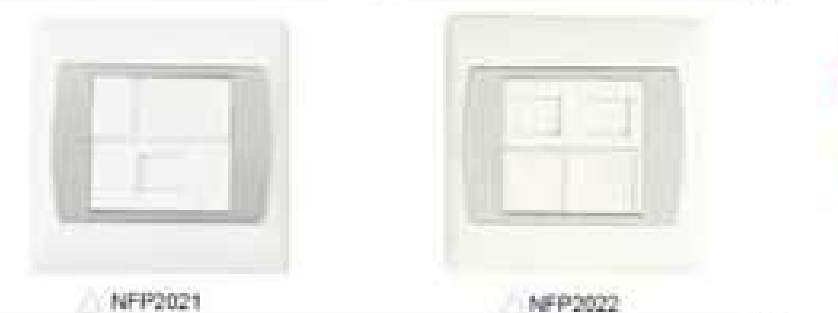
Part No.	Description
NFPAP211	Face plate 1-port
NFPAP212	Face plate 2-port
NFPAP221	Face plate 1-port
NFPAP222	Face plate 2-port



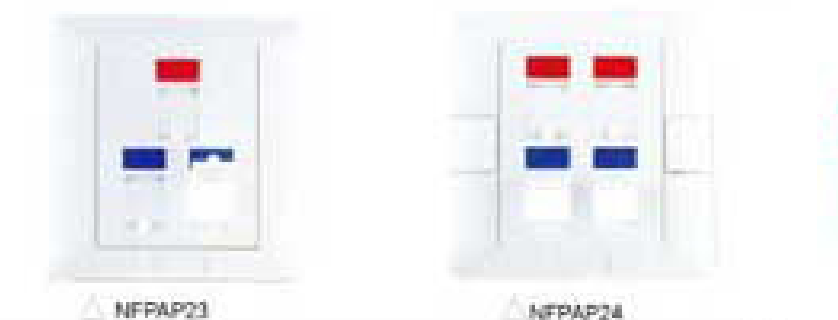
Part No.	Description
■Order Information:	
* #=color. (W=white; S=silver; B=black.)	
NFP2011-##	Face plate, 1-port, # face plate, # frame
NFP2012-##	Face plate, 2-port, # face plate, # frame



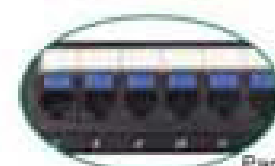
Part No.	Description
NFP2021	Face plate, with silver plated frame 1-port
NFP2022	Face plate, with silver plated frame 2-port



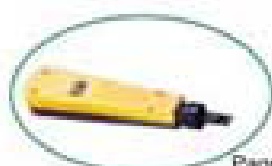
Part No.	Description
NFPAP23	Face plate 3-port
NFPAP24	Face plate 4-port



Part No.	Description
■Without Shutter	
NFP203	Face plate 3-port
NFP204	Face plate 4-port



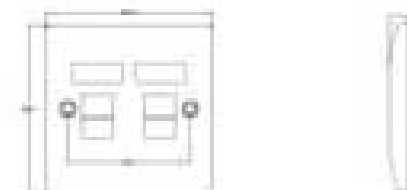
Page 17



Page 07

■Simplex design; Size:86X86mm

Part No.	Description
NFPAP111	Face plate 1-port
NFPAP112	Face plate 2-port



Part No.	Description
NFPAP121	Face plate 1-port
NFPAP122	Face plate 2-port



Replacement cover.

Part No.	Description
NFP3001	Face plate 1-port
NFP3002	Face plate 2-port



Part No.	Description
NFPAV111	Face plate 1-port
NFPAV112	Face plate 2-port



Part No.	Description
■ With Brass Screw Nuts	
NBB37	Backbox 86X86X37
NBBU37	Backbox 86X86X37
NBBU45	Backbox 86X86X45
NBBUL	Backbox 88X147X32



Page 29



Page 14



NBBU37

NBB37

FACE PLATE



FACE PLATE



Size of face plate: 86X86mm.

Order Information: "XX" =Part No (EM51 / EM52 / EM61 / EB1 / EB2 / EB3 / EB4)

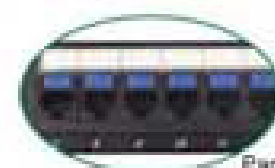
Part No.	Description	Part No.	Description
NFPE1	Modular face plate frame 1-port	EM51	Shuttered loaded module CAT-5e IDC krone
NFPE2	Modular face plate frame 2-port	EM52	Shuttered loaded module CAT-5e IDC krone
NFPE4	Modular face plate frame 4-port	EM61	Shuttered loaded module CAT-6 IDC krone
EB1	Blank plate 1unit (50x12.25mm)	NFPE1-XX	1-port face plate with XX modular
EB2	Blank plate 1unit (50x22.5mm)	NFPE2-XX	2-port face plate with XX modular
EB3	Modular plate 1-port,unloaded (50x22.5mm)	NFPE4-XX	4-port face plate with XX modular
EB4	Modular plate 1-port,unloaded (50x22.5mm)		



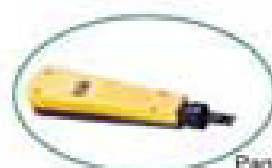
Size: 86*86mm.

Order Information: "XX" =Part No (EM51 / EM52 / EM61 / EB1 / EB2)

Part No.	Description	Part No.	Description
NFPEA	Modular face plate frame 2-port	NFPEB	Modular face plate frame 2-port
EBA1	Blanking plate 1unit (50x12.25mm)	EBB1	Blanking plate 1unit (50x12.25mm)
EBA2	Blanking plate 1unit (50x22.5mm)	EBBM	Modular plate 1port loaded (50x22.5mm)
EBAM	Modular plate 1-port,unloaded (50x22.5mm)	NFPEB-XX	Face plate with XX modular
NFPEA-XX	Face plate with XX modular	NBBE28	Bottom box 86*86*28mm
NBBE45	Bottom box 86*86*45mm		



Page 17



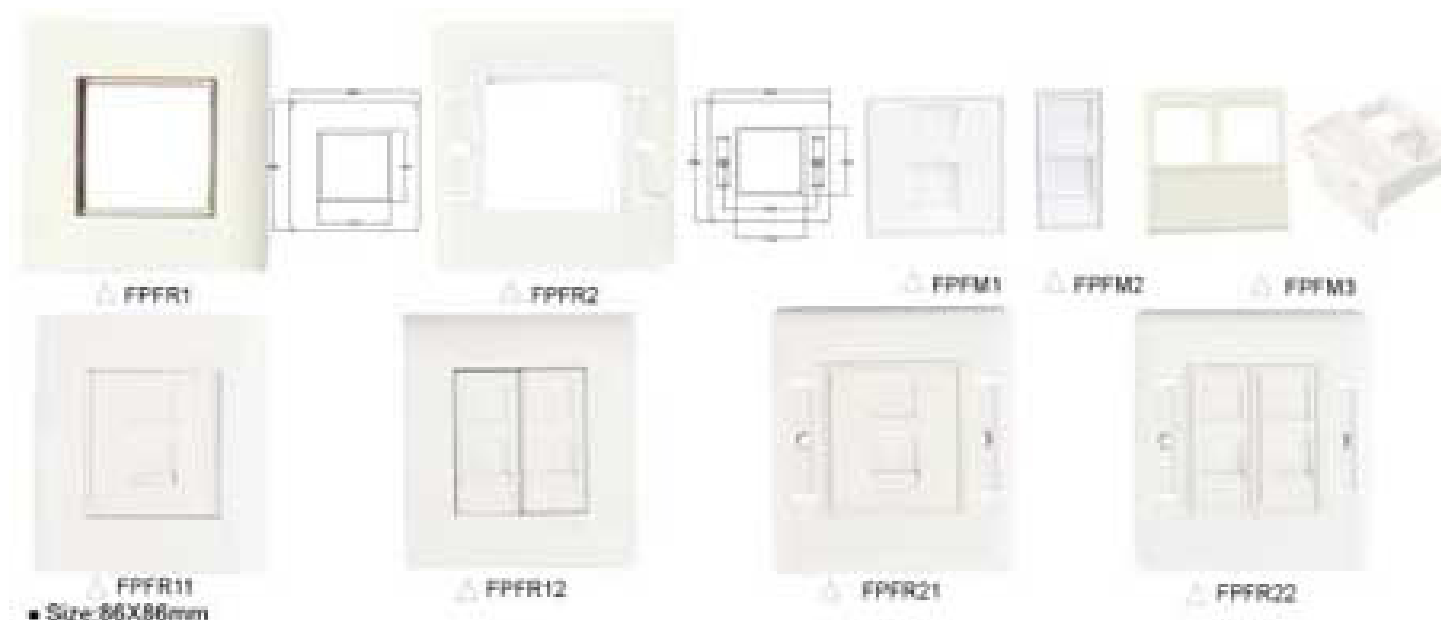
Page 07

FACE PLATE



Size of face plate:80X80mm

Part No.	Description	Part No.	Description
NMF552	2-Port Modular face plate, CAT-5e, full shielded.	NMF562	2-Port Modular face plate, CAT-6, full shielded.
NMF552B	2-Port Modular face plate, CAT-5e, full shielded with bottom box.	NMF562B	2-Port Modular face plate, CAT-6, full shielded with bottom box.
NMF5A52	2-Port Modular face plate shielded, CAT-5e.	NBB8037	Bottom box for the modular face plate.



Size:86X86mm

Part No.	Description	Part No.	Description
FPFR1	Face plate frame,for 45*45 outlet frame	FPFR11	Face plate,1-port,shuttered,unloaded
FPFR2	Face plate frame,,for 45*45 outlet frame	FPFR12	Face plate, 2-port shuttered,unloaded
FPFM1	Outlet frame,shuttered,unloaded, 45*45 mm	FPFR21	Face plate,1-port,shuttered,unloaded
FPFM2	Outlet frame, shuttered,unloaded, 22.5*45 mm	FPFR22	Face plate, 2-port shuttered,unloaded
FPFM3	Outlet frame,unloaded, 45X45 mm	FPFR31	Face plate, 1-port,unshuttered,unloaded
		FPFR32	Face plate, 2-port,unshuttered,unloaded



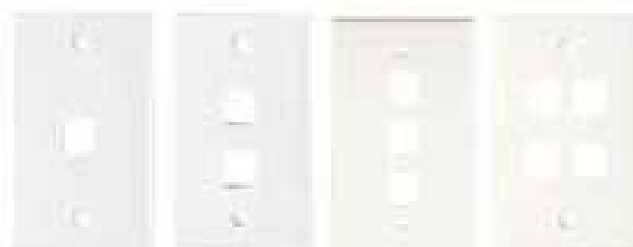
Page 29



Page 14



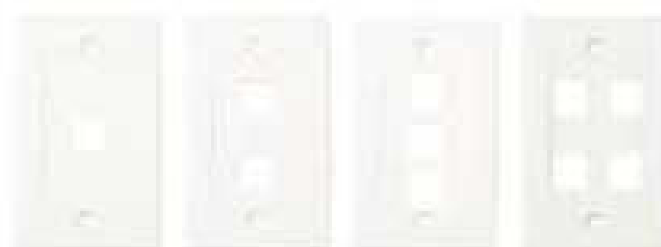
FACE PLATE



△ NFPF21 △ NFPF22 △ NFPF23 △ NFPF24

Size: 114x70mm

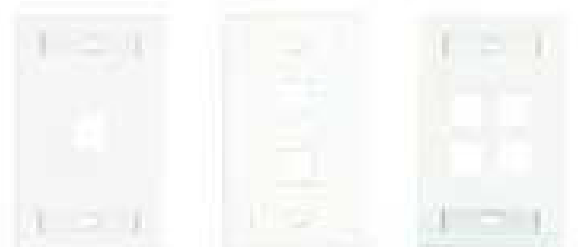
Part No.	Description
NFPF21	Face plate 1-port
NFPF22	Face plate 2-port
NFPF23	Face plate 3-port
NFPF24	Face plate 4-port



△ NFPF31 △ NFPF32 △ NFPF33 △ NFPF34

Size: 114x70mm

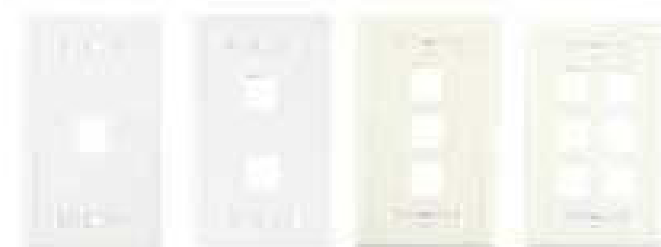
Part No.	Description
NFPF31	Face plate 1-port
NFPF32	Face plate 2-port
NFPF33	Face plate 3-port
NFPF34	Face plate 4-port



△ NFPFL21 △ NFPFL22 △ NFPFL24

Size: 114x70mm; With Labeling Strip, Clear Screw Covers

Part No.	Description
NFPFL21	Face plate 1-port
NFPFL22	Face plate 2-port
NFPFL23	Face plate 3-port
NFPFL24	Face plate 4-port



△ NFPFL11 △ NFPFL12 △ NFPFL13 △ NFPFL16

Part No.	Description
NFPFL11	Face plate 1-port
NFPFL12	Face plate 2-port
NFPFL13	Face plate 3-port
NFPFL14	Face plate 4-port
NFPFL16	Face plate 6-port



△ NFPF4F △ 4F-1 △ 4F-2 △ 4F-3

Part No.	Description
4F-1	Outlet frame, unloaded, 1-port
4F-2	Outlet frame, unloaded, 2-port
4F-3	Outlet frame, unloaded, 3-port
NFPF4F-1/2/3	1/2/3Port face plate, unloaded
NBB70	Backbox 114x70mm

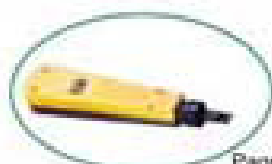


△ NFPB △ NFPH12 △ NBB70

Part No.	Description
NFPB	Blank jack for face plate
NFPA1	Video keystone adaptor for face plate
NFPA2	Audio keystone adaptor for face plate
NFPH12	Face plate 2port



Page 1



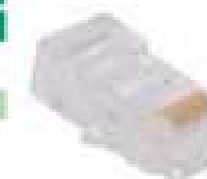
Page 07

MODULAR PLUG

- Phosphor-bronze contacts, Elective gold plating over nickel.
- Order information:
- ***Q = number of leg of contacts, 2=2-legs; 3=3-legs.
- *Gold plating: 50u' / 30u' / 15u' / 6u' / 3u' is optional.

UTP RJ45 PLUG, 8P8C, Unshielded

Part No.	Description
NMP5-Q	RJ45 plug CAT-5e, with Q legs.
NMP6-Q	RJ45 plug CAT-6, with Q legs.
NMP63-Q	RJ45 plug CAT-6, 3pcs/set, with Q legs.



△ NMP5

△ NMP6

△ NMP63

FTP RJ45 PLUG, 8P8C, Shielded

Part No.	Description
NMP55-Q	RJ45 plug, CAT-5e, with Q-legs.
NMPSC5-Q	RJ45 plug, CAT-5e, with cable clip, Q-legs.
NMP6-Q	RJ45 plug, CAT-6, with Q-legs.
NMP66A-Q	RJ45 plug, CAT-6a, with Q-legs.



△ NMP55

△ NMPSC5

△ NMP66A-3

Cover / Boot for RJ45 PLUG

- Order information:
 - # = Color. (BL=blue; GR=green; O=orange; P=purple...)
- | Part No. | Description |
|--------------|---|
| NCRJ45-# | Cover for RJ45, in # color. |
| NB-# | Boot for RJ45, in # color. |
| NMP-5E/6-Q-# | RJ45 plug, CAT-5e / CAT-6, with Q legs, in # color. |

NEW



△ NMP-5E/6-Q-#

△ NB-#

CAT-3 RJ11/RJ12 PLUG

Part No.	Description
NMP42	Modular plug 4p2c
NMP44	Modular plug 4p4c
NMP62	Modular plug 6p2c
NMP64	Modular plug 6p4c
NMP66	Modular plug 6p6c
NMPUK-64	6P4C UK plug
NMPUK-66	6P6C UK plug



△ NMP42

△ NMP44

△ NMP62



△ NMP64

△ NMP66

△ NMP66

PCB Contacts, PCB Solder Tails

- 22-26awg solid cable
- | Part No. | Description |
|-------------------------|--------------------------------|
| NPCBC-2/-3/-4/-6/-8/-10 | 2/-3/-4/-6/-8/-10pin connector |



△ NPCBC Series



Page 29



Page 14



CONNECTING BOX

- ANSI/TIA/EIA-606A Compliant.
- Provided with double-sided tape and mounting screw for easy installation.
- Can be matched with CAT-6,CAT-5e,CAT-3 keystone jack

Part No.	Description
■ "XX" = "Part No." of Keystone Jack	
NSB11	1-Port Mount box unloaded, size:50X35X28mm
NSB12	2-Port Mount box unloaded, size:60X50X28mm
NSB11-XX	1-Port Mount box loaded with "xx" keystone jack
NSB12-XX	2-Port Mount box loaded with "xx" keystone jack

Part No.	Description
■ "XX" = the "Part No." of Keystone Jack	
NSB21	1-Port Mount box unloaded, size:56x33x28mm
NSB22	2-Port Mount box unloaded, size:56x60x28mm
NSB21-XX	1-Port Mount box loaded with "xx" jack
NSB22-XX	2-Port Mount box loaded with "xx" jack

Part No.	Description
■ "XX" = the "Part No." of Keystone Jack	
NSB31	1-Port Mount box unloaded, shutter, size:60x41x25
NSB32	2-Port Mount box unloaded, shutter, size:70x60x25
NSB31-XX	1-Port Mount box shutter loaded with "xx" jack
NSB32-XX	2-Port Mount box shutter loaded with "xx" jack

Part No.	Description
■ "XX" = the "Part No." of Keystone Jack	
NSB44	4-Port Mount box unloaded
NSB46	6-port Mount box unloaded, size:165x80x30mm
NSB48	8-Port Mount box unloaded, size:215x90x30mm

Part No.	Description
■ Phosphor-Bronze Contacts	
NSB511-K	1-Port Mount box, CAT-5e, PCB, IDC, krone
NSB512-K	2-Port Mount box, CAT-5e, PCB, IDC, krone
NSB511-1	1-Port Mount box, CAT-5e, PCB, IDC, 110
NSB512-1	2-Port Mount box, CAT-5e, PCB, IDC, 110
NSB5402	2-Port Mount box, CAT-5e, PCB, 45° IDC, krone

- PCB box design
- CAT-5e, CAT-3 is optional

Part No.	Description
NSBP1	Mount box, PCB, IDC: krone, size:56.5X41X22.5
NSBP2S	RJ45/RJ45 box, shielded, size:48X24.5X25.5

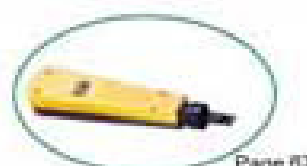
Part No.	Description
NSBP3	Mount box, unshielded PCB IDC: krone size:66X36X25.5mm
NSBP3S	Mount box, shielded, PCB, IDC: Krone, size:66X36X25.5mm

Part No.	Description
NSBR1S	RJ45/RJ45, keystone adaptor, shielded
NSBR1-B	RJ45/RJ45 keystone adaptor, unshielded, black

Part No.	Description
TLAU1SU1S-8P	RJ45/RJ45, adaptor, unshielded
TLAU1SU2S-8P	1/2 RJ45 adaptor, unshielded
TLAU1PU2S-8P	RJ45 plug to 2-RJ45 socket adaptor

Part No.	Description
NKJA1-B	Keystone jack adaptor, RJ45/RJ45

CONNECTING BOX





CONNECTING BOX



NSA11



NSA12



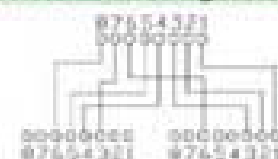
NSA13



NSA14



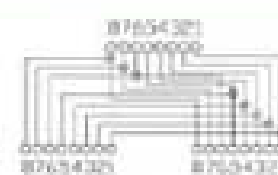
Part No.	Description
NSA11	RJ45 Plug to RJ45 sockets , shielded



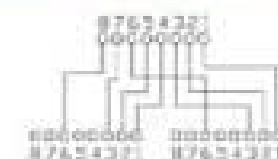
Part No.	Description
NSA12	RJ45 plug to RJ45 sockets , shielded



Part No.	Description
NSA13	RJ45 plug to RJ45 sockets , shielded



Part No.	Description
NSA14	RJ45 plug to RJ45 sockets , unshielded



Mini Shielded Patch Panel

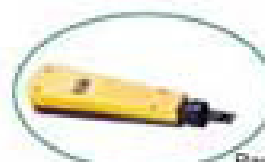
*Order Information:

*#=Color.(B=black; G=gray; I=ivory)

Part No.	Description
NPPS58-#	8-Port Shielded patch panel CAT-5e
NPPS512-#	12-Port Shielded patch panel CAT-5e



Page 1



Page 07

- FTP Full Shielded Patch Panel CAT-6, CAT-5e .
- Material:Panel--Cold Rolled Steel,Contact--Phosphor Bronze
- Gold Plating:50u"/ 30u"/ 15u"/ 8u"/ 3u" is optional.
- Order Information:
- *#=Color.(B=black; G=gray; I=ivory)

FTP Full Shielded Patch Panel CAT-6,CAT5e,1UX19'

Part No.	Description
NPPS524-#	24-Port Shielded patch panel CAT-5e, 1UX19' , with # color.

Part No. Description

NPPS624-#	24-Port Shielded patch panel, CAT-6 1UX19' , with # color.
-----------	--

Part No. Description

NPPS2624-#	24-Port Shielded patch panel, CAT-6, 1UX19' ,with # color.
------------	--

Part No. Description

NPPSU524-#	24-Port Patch panel CAT-5e,1UX19' with # color
------------	--

*Half-shielded.

Part No. Description

NPBS124	24-Port jack panel,unloaded ,1UX19'
NPBS216	16-Port jack panel,unloaded ,1UX19'

*Easy installation with shielded keystone jack by snap-in.

*Integrated cable management.



Page 20



Page 9

FTP PATCH PANEL



NPPS524



NPPS624

NEW



NPPS2624



NPPSU524



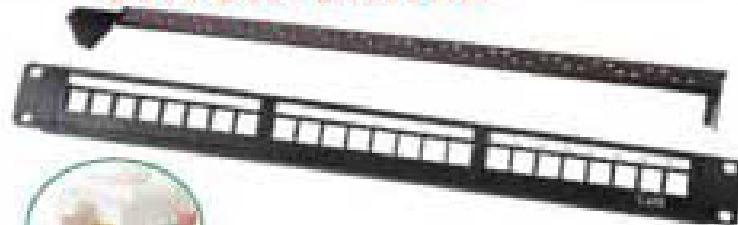
NPBS124



NPBS216



PATCH PANEL



NPB124

NEW



NPB224



NPB316



NPB424



NPB524



NPB624JPD

- Design for Simplifies Installation Allowing for Quick Additions or Changes
- Multi-Applications :CAT-6a,CAT-6,CAT-5e,CAT-3,Audio / Video and Fiber Optic

Part No.	Description
NPB124	24-Port panel, unloaded,1UX19'
NPB124-XX	24-Port panel loaded with "XX" jack.

Part No.	Description
NPB224	24-Port panel unloaded,1UX19'
NPB224-XX	24-Port panel loaded with "XX" jack.

Part No.	Description
NPB316	16-Port Unloaded jack panel 1UX19'
NPB316-XX	16-Port Panel loaded with "xx" jacks.
NPB332	32-Port Unloaded jack panel 2UX19'
NPB332-XX	32-Port Panel loaded with "xx" jacks.

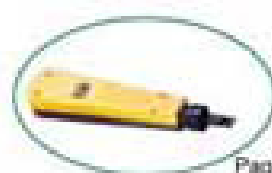
Part No.	Description
NPB424	24-Port Panel unloaded , 1UX19'
NPB424-JNX	24-Port Panel loaded with keystone jack.

Part No.	Description
NPB524	24-Port Panel unloaded , 1UX19'
NPB524-JTC	24-Port Panel loaded with keystone jacks

Part No.	Description
NPB624PD	24Port Panel unloaded, 1UX19'.
NPB624JPD	24Port Panel loaded with keystone jacks.



Page 1



Page 07

- 19" Rack Mount UTP Patch Panel,Catagory 6
- Panel Material: Cold-rolled Steel
- Contact Material: Phosphor Bronze
- Gold Plating: 50 Micro-inch

Part No.	Description
NPP6124UL	24-Port Patch panel CAT-6 1UX19'
NPP6148UL	48-Port Patch panel CAT-6 1UX19'

Part No.	Description
NPP6224AP	24-Port Patch panel CAT-6 1UX19'
NPP6248AP	48-Port Patch panel CAT-6 1UX19'

Part No.	Description
NPP6324	24-Port Patch panel CAT-6 ,1UX19'
NPP6348	48-Port Patch panel CAT-6, 1UX19'

UTP PATCH PANEL



NPP6124UL



NPP6224AP



NPP6324

NEW



Page 20



Page 23



UTP PATCH PANEL

- PGE RATED to 4X IEEE 802.3af
- Gigabit Ethernet Qualified

Part No.	Description
NPP512M-K	12-Port Mini patch panel CAT-5e 1U x 10" IDC:krone
NPP512M-1	12-Port Mini patch panel CAT-5e 1U x 10" IDC:110
NPP512EM	12-Port Mini patch panel CAT-5e 1U x 10" IDC:krone, with back frame



Part No.	Description
NPP5116-K	16-Port Patch panel CAT-5e 1U, IDC:krone
NPP5124-K	24-Port Patch panel CAT-5e 1U, IDC:krone
NPP5148-K	48-Port Patch panel CAT-5e 1U, IDC:krone
NPP5116-1	16-Port Patch panel CAT-5e 1U, IDC:110
NPP5124-1	24-Port Patch panel CAT-5e 1U, IDC:110
NPP5148-1	48-Port Patch panel CAT-5e 1U, IDC:110



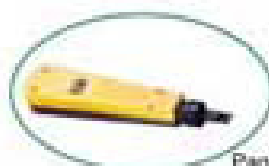
Part No.	Description
■ Metal Cable Management Bar is Optional	
NPP5224	24-Port Patch panel CAT-5e 1U, IDC: krone
NPP5248	48-Port Patch panel CAT-5e 1U, IDC: krone
* 4-colored / all black color is optional	



Part No.	Description
*With Label Strip on Front of the Panel.	
NPP5324	24-Port Patch panel CAT-5e 1U IDC:110
NPP5348	48-Port Patch panel CAT-5e 1U IDC:110
*Panel Material: Aluminum.	



Part No.	Description
■ Metal Cable Management Bar is Optional	
NPP5424	24-Port Patch panel CAT-5e, 1U 45° angled, IDC: krone
* 4-colored / all black color is optional	



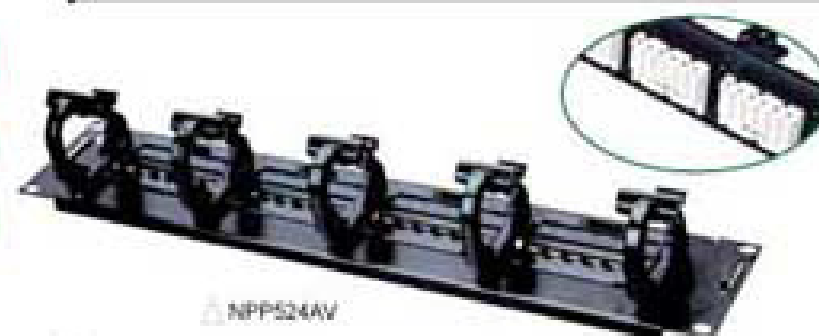
EXCELLENT NETWORKING SOLUTION

- Material-Panel-Cold Rolled Steel, Contact-Phosphor Bronze
- Gold Plating:50'u / 30'u / 15'u / 6'u / 3'u is optional

Part No.	Description
NPP524AP	24-Port Patch panel CAT-5e IDC:110,1U
NPP548AP	48-Port Patch panel CAT-5e IDC:110,2U



Part No.	Description
*With Cable Manager on the Front and Rear.	
NPP524AV	24-Port Patch panel CAT-5e 1U IDC:110
NPP548AV	48-Port Patch panel CAT-5e 2U IDC:110
NPP524AV	24-Port Patch panel CAT-6 1U IDC:110
NPP548AV	48-Port Patch panel CAT-6 2U IDC:110



Part No.	Description
NPP524HB	24-Port Patch panel CAT-5e 1U IDC:110
NPP548HB	48-Port Patch panel CAT-5e 2U IDC:110



Part No.	Description
*With Label Strip on Front of the Panel.	
NPP5824	24-Port Patch panel CAT-5e 1U IDC:110
NPP5848	48-Port Patch panel CAT-5e 1U IDC:110



Part No.	Description
NPP350-1	50-Port Patch panel CAT-3 IDC:110
NPP325-1	25-Port Patch panel CAT-3 IDC:110
NPP350-K	50-Port Patch panel CAT-3 IDC:krone
NPP325-K	25-Port Patch panel CAT-3 IDC:krone



UTP PATCH PANEL



110 SYSTEM

- Material: * Polycarbonate : UL 94V-0 ;
- *Contact material: Phosphor bronze with tin/lead solder.
- *Conductor type: solid or stranded 26-22AWG.

110 Modular Plug

Part No.	Description	Part No.	Description
N110P1	1pair Plug	N110PT1	1pair Plug
N110P2	2pair Plug	N110PT2	2pair Plug
N110P4	4pair Plug	N110PT4	4pair Plug

Color-Coded Connecting Blocks

Part No.	Description
N110C4	110 Connecting block 4-pair CAT-5e
N110C5	110 Connecting block 5-pair CAT-5e

110 Wiring Block

- *4/5-pair connecting block is optional.
- *"0"=Number of pair. 4=4pair; 5=5pair

Part No.	Description
NWB50	50pair 110 Wiring block without legs
NWB100	100pair 110 Wiring block without legs
NWB50L	50pair 110 Wiring block with legs
NWB100L	100pair 110 Wiring block with legs

110 Wiring Rack-Mount Kit

- *"0"=Number of pair. 4=4pair; 5=5pair

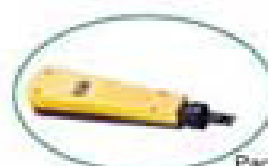
Part No.	Description
NWBR1	100pair 110 wiring rack panel 1UX19"
NWBR2	200pair 110 wiring rack panel 2UX19"
NWBR1-0	100pair 110 wiring rack-mount kit with 0-pair connecting block CAT-5e. 1UX19"
NWBR2-0	100pair 110 wiring rack-mount kit with 0-pair connecting block CAT-5e. 1UX19"

Cable Manager Bar for 110 Wiring Block

Part No.	Description
N110JR	Cable Management trough, rack-mount, 1UX19"
N110J	Cable Management trough without standoff leg.
N110JL	Cable Management trough with standoff leg.



Page 29



Page 37

- *Horizontal Cable Management with Plastic Finger.
- *Panel Material: Cold Rolled Steel.

Part No. Description

*Plastic finger snap together quickly with the use of tool

NCM4P1 Cable management panel, plastic rings, 1UX19"

Part No. Description

*Plastic finger snap together quickly with the use of tool

NCM3P1 Cable management panel, plastic rings, 1UX10"

NCM5P1 Cable management panel, plastic rings, 1UX19"



Part No. Description

NCM5P2 Cable management panel, plastic rings, 1UX19"

Part No. Description

NCM5P3 Cable management panel, plastic rings, 1UX19"

NCM3P3 Cable management panel, plastic rings, 1UX10"

Part No. Description

NCM5P4 Cable management panel, with plastic rings and brush, 1UX19"



Page 27



Page 23

CABLE MANAGEMENT



NCM4P1



NCM3P1

NCM5P1



NCM5P2



NCM3P3

NCM5P3



NCM5P4

NEW



CABLE MANAGEMENT



△ NCM5M2



△ NCM5M3



△ NCM8M1



△ NCM42M



△ NCMCMM



△ NCMC2M13



△ NCMC9



△ NCMCP13



△ NCMCNX

■ Horizontal Cable Management with Metal Finger / Front Cover

■ Material: Cold Rolled Steel, Powder Coat Finish.

■ For 19" rack.

■ Cable Management with Metal Finger

■ Part No. Description

NCM5M2 Cable management panel, metal rings 1U.

■ Part No. Description

NCM5M3 Cable management panel, metal rings 1U.

■ Part No. Description

NCM8M1 Cable management panel, metal rings 1U.

■ Part No. Description

NCM42M Cable management panel, metal rings 2U.

■ Cable Management with Metal Finger and Front Cover

■ Part No. Description

NCMCMM Cable management panel with cover, 1U.

■ Part No. Description

NCMC2M13 Cable management panel, with cover 1U

NCMC2M13 Cable management panel, with cover, 2U.

■ Part No. Description

NCMC9 Cable management panel, with cover 1U

Material: Plastic

■ Part No. Description

NCMCP13 Cable management panel, with cover, 1U

■ Part No. Description

NCMCNX Cable management panel with cover, 1U



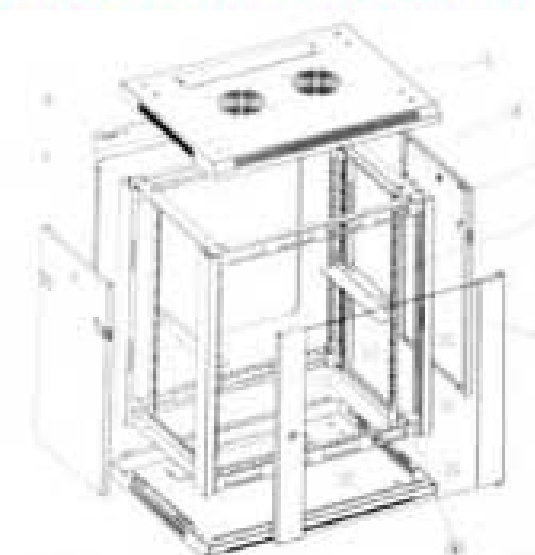
Page 29



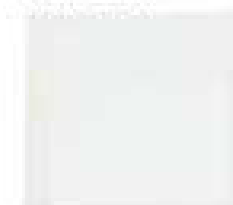
Page 06

WALL MOUNT CABINET

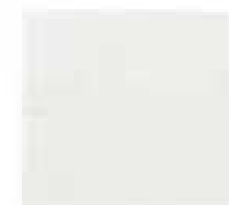
Wall Mount Cabinet



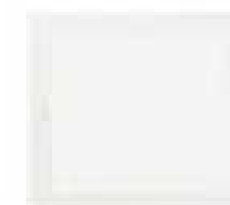
Front Door:



A=Tempering-glass door



B=Full-steel door

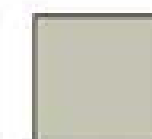


C=Perforation-steel door

Color



B RAL9004



G RAL7035

■ Material: Cold rolled steel, Powder coat finish.

■ Load capacity: 50KGS

■ Fan unit is optional

■ Order information: ①=Front door; "G"=color

Part No.	Capacity	Width	Depth
NCBW1-6-①-#	6U	600	450
NCBW1-9-①-#	9U	600	450
NCBW1-12-①-#	12U	600	450
NCBW1-15-①-#	15U	600	450

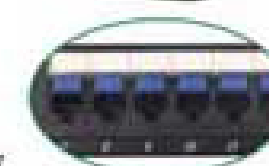
Part No.	Capacity	Width	Depth
NCBW1-18-①-#	18U	600	450
NCBW1-20-①-#	20U	600	450
NCBW1-22-①-#	22U	600	450
NCBW1-27-①-#	27U	600	450



Part No.	Capacity	Width	Depth
NCBW5-6-①-#	6U	600	550
NCBW5-9-①-#	9U	600	550
NCBW5-12-①-#	12U	600	550
NCBW5-15-①-#	15U	600	550
NCBW5-18-①-#	18U	600	550
NCBW5-22-①-#	22U	600	550
NCBW5-27-①-#	27U	600	550



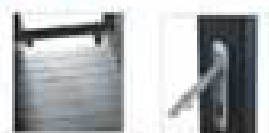
Page 27



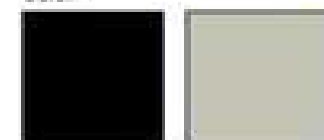
Page 17



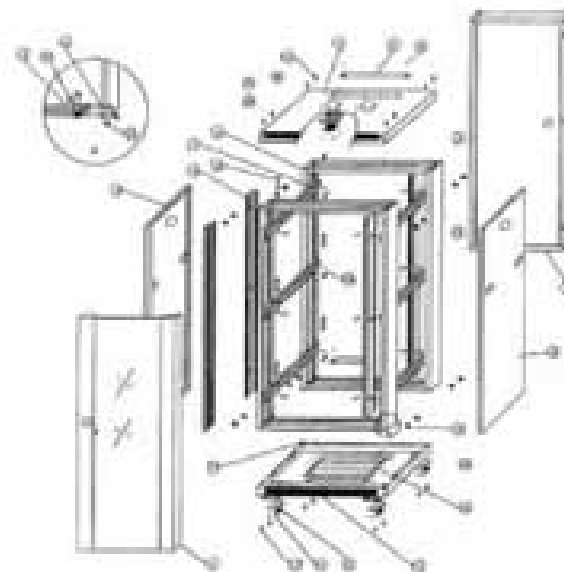
STAND CABINET



Color



B=RAL9004 G=RAL7035



■Material: Cold rolled steel, Powder coat finish.

■Heavy duty roll formed steel frame. Doors and removable side panels are keyed.

■Maximum static weight capacity: 500KGS.

■Included accessories: 2pcs Fixed shelf, 1pc Power panel with 6-port out-let, 1pc Fan-assembly; (600X600-2Fans, 600X800-4Fans, 600X1000-4Fans), 4pcs Casters & 4pcs Adjustable feet. Panel mounting screw and nut sets.

***More accessory is available on requested.

■Shipped un-assembled.

■More capacity is available on requested. (As-18U, 27U, 32U, 47U.)

■Order information: ①=Front door; ②=Rear door; *F=Color

Part No.	Capacity	Width	Depth
NCBF168-20-①-②-F	20U	600	600
NCBF168-27-①-②-F	27U	600	600
NCBF168-30-①-②-F	30U	600	600
NCBF168-37-①-②-F	37U	600	600
NCBF168-40-①-②-F	40U	600	600
NCBF168-42-①-②-F	42U	600	600
NCBF168-30-①-②-F	30U	600	600

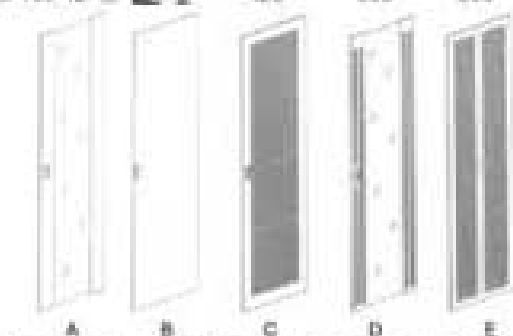
Part No.	Capacity	Width	Depth
NCBF168-37-①-②-F	37U	600	600
NCBF168-40-①-②-F	40U	600	600
NCBF168-42-①-②-F	42U	600	600
NCBF1610-40-①-②-F	40U	600	1000
NCBF1610-42-①-②-F	42U	600	1000
NCBF168-40-①-②-F	40U	600	600
NCBF168-42-①-②-F	42U	600	600



NCBF168-42



NCBF168-42



A=Tempering-glass door; B=Full-steel door; C=Perforation-steel door; D=Tempering-glass door with frame punched; E=Dual-swing steel door, perforation.



Page 28



Page 06

STAND CABINET



■Material: Cold rolled steel, Powder coat finish.

■Heavy duty roll formed steel frame.

■Maximum static weight capacity: 1000KGS.

■Included accessories:

2pcs Fixed shelf; 1pc Power panel with 6-port out-let; 1unit of 2/4-fan-assembly; (600X600-2Fans, 600X800-4Fans, 600X1000-4Fans); 4pcs Casters & 4pcs Adjustable feet. Panel mounting screw-nut sets.

■Shipped un-assembled.

***More accessory is available on requested.

■Order information: ①=Front door; ②=Rear door; *F=Color

Part No.	Capacity	Width	Depth
NCBF268-①-②-F	20U	600	600
NCBF268-①-②-F	27U	600	600
NCBF268-①-②-F	30U	600	600
NCBF268-①-②-F	37U	600	600
NCBF268-①-②-F	40U	600	600
NCBF268-①-②-F	42U	600	600
NCBF268-①-②-F	30U	600	600

Part No.	Capacity	Width	Depth
NCBF268-①-②-F	37U	600	600
NCBF268-①-②-F	40U	600	600
NCBF268-①-②-F	42U	600	600
NCBF261-①-②-F	40U	600	1000
NCBF261-①-②-F	42U	600	1000
NCBF268-①-②-F	40U	600	600
NCBF268-①-②-F	42U	600	600

Equipment Rack

■Material: 1.8mm Cold rolled steel

■Powder coat finish.

■Shipped un-assembled.

■Order information: *F=Color (B=black, G=gray) .

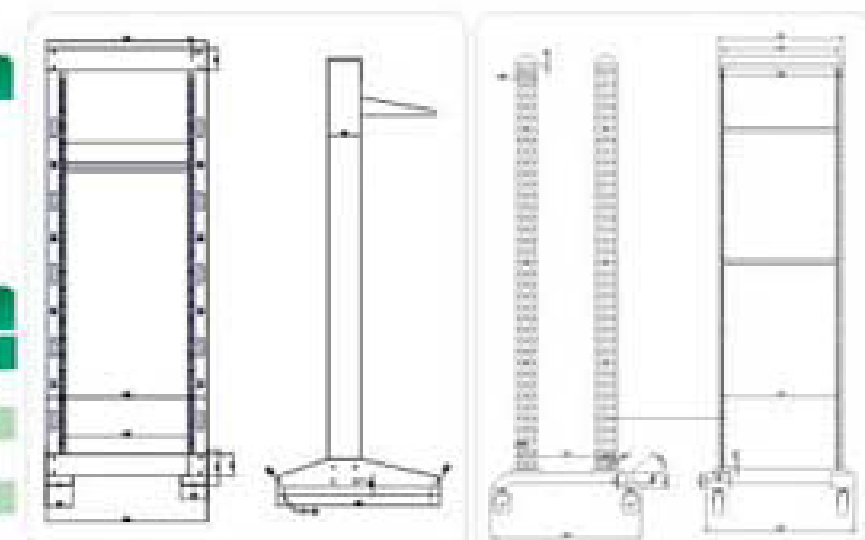
Color No.: G=RAL2735 ; B=RAL9004

Two-Rack Style

Part No.	Capacity	Width	Depth
NR21-27-F	27U	570	100
NR21-30-F	30U	570	100
NR21-37-F	37U	570	100
NR21-40-F	40U	570	100
NR21-42-F	42U	570	100

Four-Rack Style

Part No.	Capacity	Width	Depth
NR41-27-F	27U	600	100
NR41-30-F	30U	600	100
NR41-37-F	37U	600	100
NR41-40-F	40U	600	100
NR41-42-F	42U	600	100



NR21-42



NR41-42



Page 27



Page 17



ACCESSORIES



Equipment Shelf for 19" rack	
Part No.	Description
NCBA11-10/14/18	Equipment shelf, for equipment rack, depth: 10" / 14" / 18"
NCBA12-64	Equipment shelf, for wall cabinet, depth: for 600*450/ for 600*550mm.
NCBA12-66/68/61	Equipment shelf, for stand cabinet, depth: for 600*600/ for 600*800/ for 600*1000
NCBA11S-68/61	Equipment shelf, telescopic, 1Ux19", depth: for 600*800/ for 600*1000mm.



Part No.	Description
NCBA81	Screw-nut sets, size: 6mm.
NCBA21F	High-speed fan.



19" Filler	
Part No.	Description
NCBA41	19" Filler panel 1U
NCBA42	19" Filler panel 2U
NCBA43	19" Filler panel 3U



Filler Panel with Brush, 1Ux19"	
Part No.	Description
NCBA4B11	Filler panel, with brush.
NCBA4B12	Filler panel, with brush, with 2holes.
NCBA4B21	Filler panel, with brush.



Filler Panel with Brush, 1Ux19"	
Part No.	Description
NCBA4B3	Filler panel, with brush 1Ux19"



Page 28



Page 06

- Horizontal Power Strips, 19" Rack Mount, with 15" Cord, 220V or 110V
- Germany / USA / UK ...Outlet is Optional.
- Order information:
- *XX=Country style (GE=Germany; US=USA; UK=England; ...)
- *00=Numbers of outlet. (6=6-Outlet; 8=8-Outlet; 10=10-Outlet)

Horizontal Power Strips	
Material of the housing: Plastic, 1U x 19"	
Part No.	Description
NCBA31-XX-00	Rack mounting power strip, with 00pcs of XX type power socket.

Horizontal Power Strips	
Material of the housing: Plastic, 1.5U x 19"	
Part No.	Description
NCBA32-XX-00	Rack mounting power strip, with 00pcs of XX type power socket.

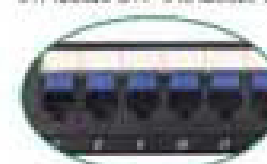
Horizontal Power Strips	
Material of the housing: Aluminum 1U x 19"	
Part No.	Description
NCBA33-XX-00	Rack mounting power strip, with 00pcs of XX type power socket.

Horizontal Power Strips	
Material of the housing: Aluminum 1.5U x 19"	
Part No.	Description
NCBA34-XX-00	Rack mounting power strip, with 00pcs of XX type power socket.

Optional Outlet of the Power Stripper



Page 1



Page 17

P.D.U.



NEW

**CABLE****Lan cable**

- Standard: ISO/IEC11801, ANSI/TIA/EIA-568A/B
- Specification: 23AWG/24AWG/26AWG Conductor, 4pair twisted, PE insulation, FR/PVC or LSOH jacket.
- Application: 10/100base-T/Gigabit Ethernet, ATM, Token-ring
- Package: 305meters/reel-out box or 100meters/box
- Order Information: "G"=Color (G=gray; GR=green; BL=blue; BK=black; W=white; R=red; Y=yellow; I=ivory)

Part No.	Description	Part No.	Description
CUTP15E-#	CAT-5e UTP Solid cable	CUTP16-#	CAT-6 UTP Solid cable
CFTP15E-#	CAT-5e FTP Solid cable	CFTP16-#	CAT-6 FTP Solid cable
CSTP15E-#	CAT-5e SFTP Solid cable	CSTP16-#	CAT-6 SFTP Solid cable

Telephone Cable

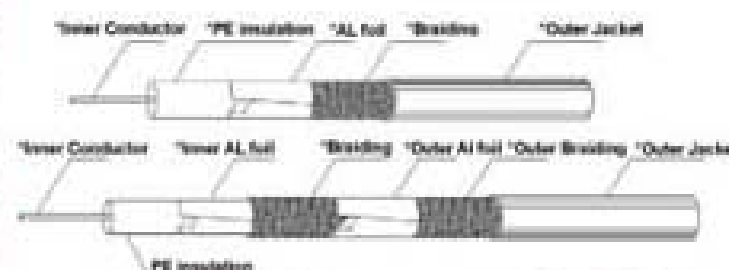
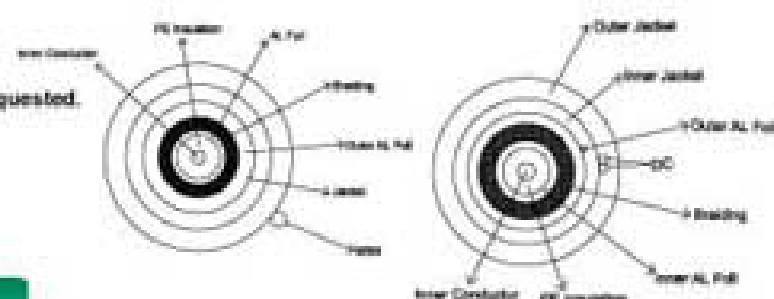
- Specification: 28AWG/30AWG conductor, PE insulation, FR/PVC or LSOH jacket.
- Flat or round cable is optional.
- Package: 100meters/Reel, or 100meters/box
- Order Information: "I"=Color (I=ivory; W=white; B=black)

Part No.	Description	Part No.	Description
CTEF2	2wire Flat cable	CTEF8	8wire Flat cable
CTEF4	4wire Flat cable	CTER2	2wire Round cable
CTEF6	6wire Flat cable	CTER4	4wire Round cable

**Coaxial Cable**

- Package: 1pc/bag. Special package is available on requested.
- Order Information: "00"=Length; (100=100Meters, 500=500Meters)
- "S"=with steel wire; "D"=Double braid shielded
- "I"=Color (BK=black; W=white).

Part No.	Description
RG58	Coaxial cable, RG58
RG58D	Coaxial cable, RG58 Dual-shield
RG59T	Coaxial cable, RG59 Tri-shield
RG58D+MSN	Coaxial cable, RG58 with messenger
RG59 8U	Coaxial cable, RG59 8U
RG59 8U+2DC	Coaxial cable, RG59 8U+2DC
RG6D	Coaxial cable, RG6 Dual-shield
RG6T	Coaxial cable, RG6 Tri-shield
RG6D+MSN	Coaxial cable, RG6 with messenger
RG11	Coaxial cable, RG11
RG11+MSN	Coaxial cable, RG11, with messenger



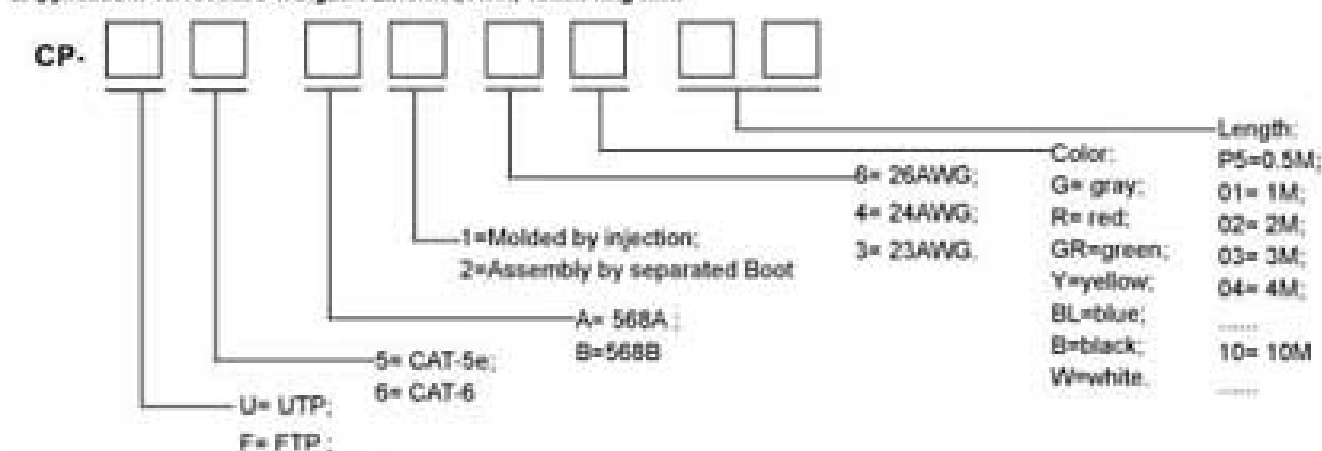
Page 11



Page 06

PATCH CORD**LAN Cord**

- All patch cord are 100% factory tested.
- Standard: ISO/IEC11801, ANSI/TIA/EIA-568-B.2
- Specification: Modular plug - RJ45 plug at two ends.
- Application: 10/100base-T/Gigabit Ethernet, ATM, Token-ring

**110 Cord**

- Specification: Cable-24AWG/26AWG strand conductor, twisted wire, PE insulation, FR/PVC or LSOH jacket.
- Order information: "I"=Color (G=gray; GR=green; BL=blue; BK=black; W=white; R=red; Y=yellow; I=ivory)
- "00"=Length (P5=0.5M; 01=1M; 02=2M; 03=3M; 05=5M,.....)



CP1105E11-00-#	110 Patch cord 1pair 110 plug to 1pair 110, "00"m, "I" colour
CP1105E22-00-#	110 Patch cord 2pair 110 plug to 2pair 110, "00"m, "I" colour
CP1105E44-00-#	110 Patch cord 4pair 110 plug to 4pair 110, "00"m, "I" colour
CP1105ER1-00-#	110 Patch cord RJ45 plug to 1pair 110, "00"m, "I" colour
CP1105ER2-00-#	110 Patch cord RJ45 plug to 2pair 110, "00"m, "I" colour
CP1105ER4-00-#	110 Patch cord RJ45 plug to 4pair 110, "00"m, "I" colour

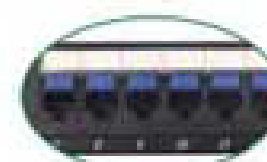
TEL Cord

- Specification: Cable-28AWG/30AWG strand conductor, PE insulation, FR/PVC jacket.
- Order information: XX=Modular plug (U64=6p4c US type; K64=6p4c UK type; U62=6p2c US type; K62=6p2c UK type)
- "I"=Color (I=ivory; BK=black; W=white)
- "00"=Length (P5=0.5M; 01=1M; 02=2M; 03=3M; 05=5M,.....)

Part No.	Description
CPT-XX/XX-00-#	Tel. extension cord XX plug - XX plug, "00"m, "I" color
CPT-XX/F1XX-00-#	Tel. extension lead XX plug -Female 2-socket XX, "00"m, "I" color
CPT-XX/F2XX-00-#	Tel. extension lead XX plug -Female 2-socket XX, "00"m, "I" color
CPTC-XX/XX-00-#	Tel. coil cord -XX plug - XX plug, "00"m, "I" color



Page 1

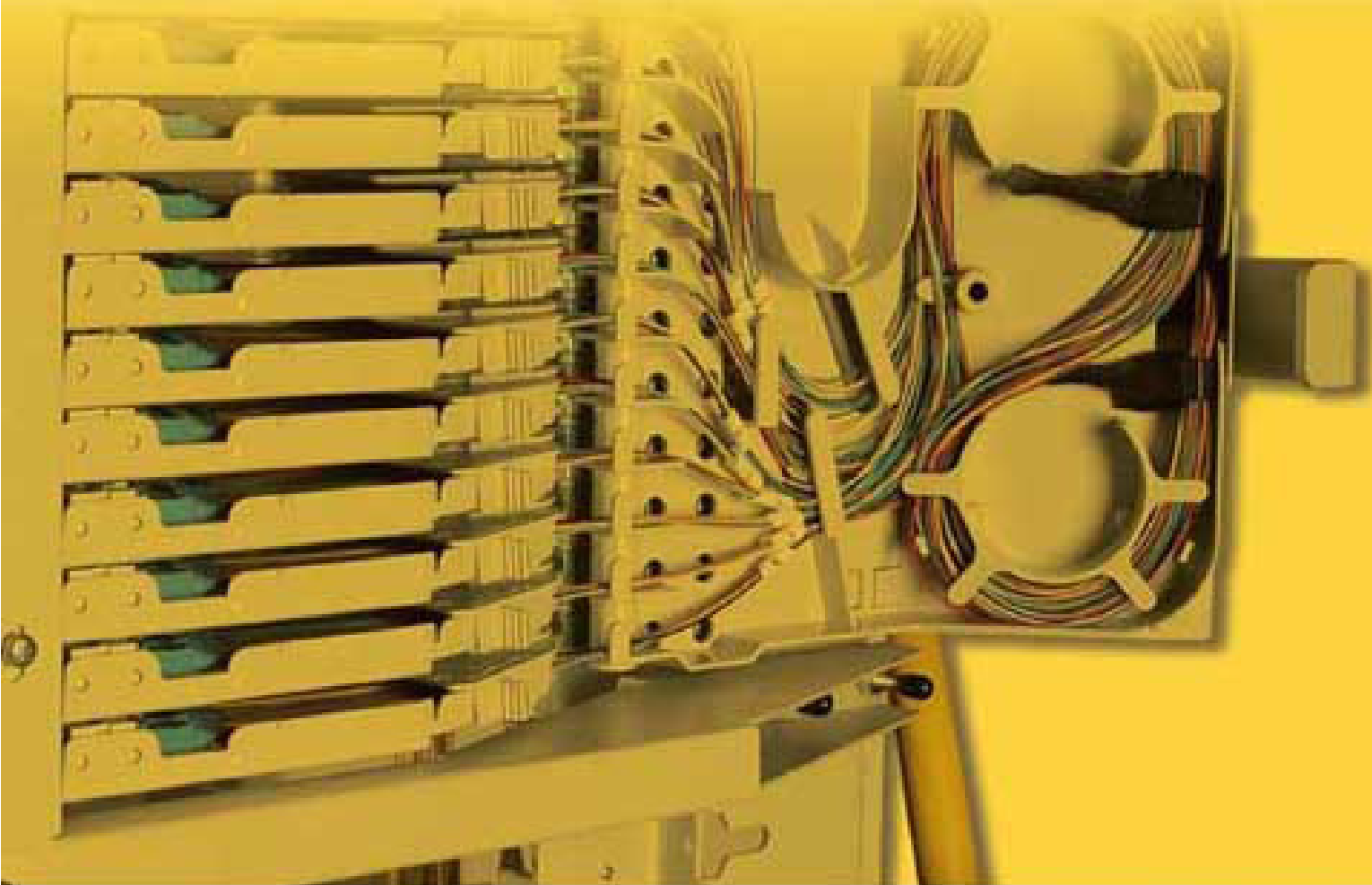


Page 17

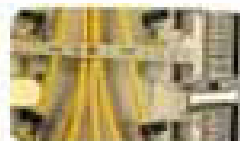
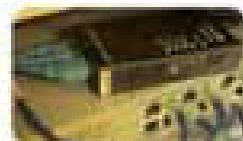
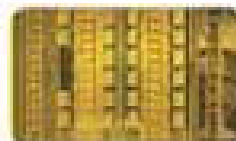


PATCH CORD

FIBER SOLUTION



GETEK's fiber products are with supplier quality connectors, high-quality PC zirconia LC, SC, FC and ST-style ferrules, factory polished to provide low insertion loss and low back reflection.



- Meets the requirements of TIA/EIA-568-B.3 specification.
- Operating / storage temperature: -40°C to +75°C
- 100% optically tested for premium performance.
- Multimode insertion loss: <0.5dB(0.25dB typical).
- Multimode return loss: better than -25dB.
- Singlemode insertion loss: <0.35dB (0.15dB typical).
- Singlemode return loss: better than -55dB.
- SC, ST, LC, FC and MT-RJ versions available.
- 900um buffered 62.5um, 50um and SM fibers.
- For special requirements such as custom lengths and buffer colors, please contact us at getek@getek.cn



QUALITY-PRODUCTS
UNDER PROFESSIONAL

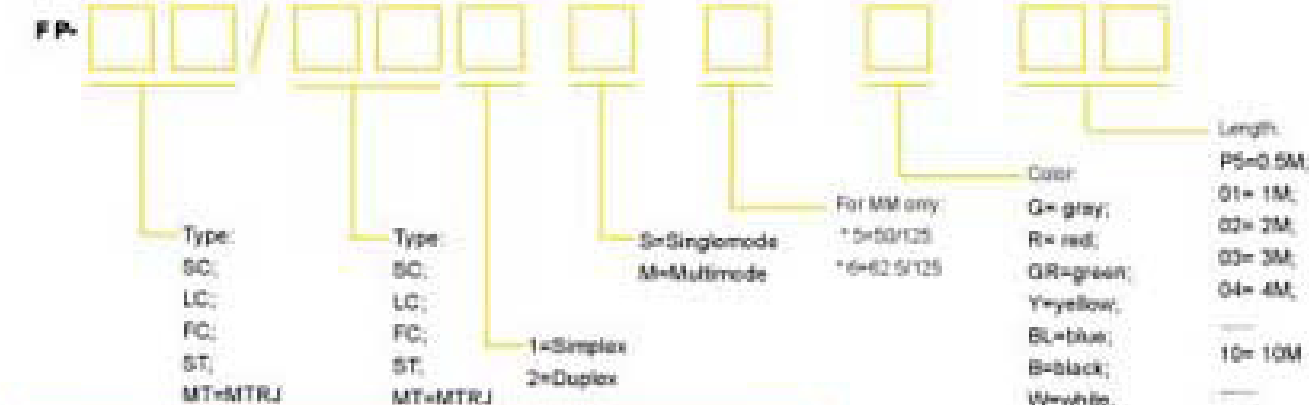
EXCELLENT FIBER SOLUTION

FIBER PATCH CORD

Fiber Patch Cord



- Connector Ferrule: Zirconia Ceramic
- 100% Visual Inspection, 100% Insertion loss testing, test report included.
- MM/SM mated pair insertion loss: <0.35dB(0.15dB typical), return loss: MM >25dB, SM >55dB
- Operating / storage temperature: -0°C to +75°C



Fiber Pigtail

- Order Information:
*For multimode, (*5= 50/125; *6= 62.5/125.)
*00= fiber length. (01=1M, 02=2M...)

Part No.	Description
FPTSC15-00	F.O. Pigtail SC, SM, simplex 00 meters
FPTSC1M-55-00	F.O. Pigtail SC, MM-(50/125 or 62.5/125), simplex 00meters
FPTLC15-00	F.O. Pigtail LC, SM, simplex 00meters
FPTLC1M-55-00	F.O. Pigtail LC, MM-(50/125 or 62.5/125), simplex 00meters
FPTFC15-00	F.O. Pigtail FC, SM, simplex 00meters
FPTFC1M-55-00	F.O. Pigtail FC, MM-(50/125 or 62.5/125), simplex 00meters
FPTST15-00	F.O. Pigtail ST, SM, simplex 00meters
FPTST1M-55-00	F.O. Pigtail ST/MM-(50/125 or 62.5/125), simplex 00meters

*MT-RJ & E2000 & DIN is available on requested.

Fiber Connector

- Order Information:
*0.0=number. (3.0=for 3.0 fiber cable; 3.0=for 3.0 fiber cable, 0.9=for 0.9 fiber cable.)

Part No.	Description
FCSCS-0.0	Fiber connector SC, SM, -0.0
FCSCM-0.0	Fiber connector SC, MM, -0.0
FC LCS-0.0	Fiber connector LC, SM, -0.0
FC LCM-0.0	Fiber connector LC, MM, -0.0
FC FCS-0.0	Fiber connector FC, SM, -0.0
FC FCM-0.0	Fiber connector FC, MM, -0.0
FCSTS-0.0	Fiber connector ST, SM, -0.0
FCSTM-0.0	Fiber connector ST, MM, -0.0



Page 33



Page 37





FIBER PRODUCTS



Fiber Protection Sleeve

*Inside material: steel or ceramic is optional

Part No. Description

FHSS6 Fiber heat shrink sleeve 60mm

FHSS5 Fiber heat shrink sleeve 50mm

FHSS4 Fiber heat shrink sleeve 40mm

FHSSC3 Fiber heat shrink sleeve 30mm

Mechanical Splicer

Part No. Description

FMS01 Fiber mechanical splicer

NEW

Fiber Splitter

*Operating wavelength: 1310/1550nm

*Order information:

"XX"=the end of pigtail (SC / FC / LC / ST)

"A"=type of cable (A=0.5mm; B=3.0mm; C=3.0mm)

"00"=length of the cable (01=1M; 02=2M...)

Part No. Description

FS-12-XX-A-00 Fiber splitter, 1/2

FS-14-XX-A-00 Fiber splitter, 1/4

FS-16-XX-A-00 Fiber splitter, 1/6

FS-18-XX-A-00 Fiber splitter, 1/8

Fiber Media Converter

*Order information:

"X"=A or B (A=external power; B=internal power card module)

"@"=1 or 2 ("1"=10/100Mbps; "2"=10/100/1000Mbps)

"M"=SM or MM ("S"=singlemode; "M"=multimode)

"00"=distance-km (10=10km; 20=20km; 40km...)

Part No. Description

FMC-X-@-M-00 Fiber media converter

Fiber Splice Tray

*for FWEP & FEP series enclosure

Part No. Description

FMP1 Fiber splice tray, unloaded, 12fibers

FMP1-XX Fiber splice tray, loaded with XX adaptor, 12fibers



Page 30



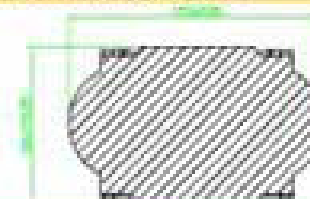
Page 31

Fiber Splice Tray

Part No. Description

FST1-12 Fiber splice tray, 12fibers

FST2-12 Fiber splice tray, 12fibers

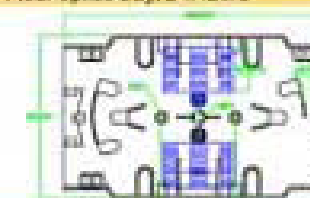


Fiber Splice Tray

Part No. Description

FST3-12 Fiber splice tray, 12Fibers

FST3-24 Fiber splice tray, 24Fibers

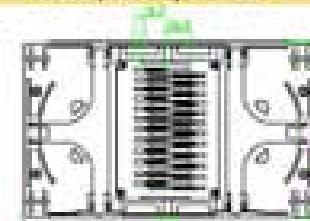


Fiber Splice Tray

Part No. Description

FST4-12/24 Fiber splice tray, for 12fiber / 24fibers

FST5-12 Fiber splice tray, 12fibers



Termination Fiber Box

Part No. Description

FTBC8 Termination fiber box, 8fibers

FTBC12 Termination fiber box, 12fibers

FTBC24 Termination fiber box, 24fibers

Termination Fiber Box

*Order information:

00=number of fiber (8=8fiber; 12=12fiber)

XX=Adaptor (FC / SC / ST / LC)

Part No. Description

FTBA-8-XX Termination fiber box, unloaded, 8fibers for XX

FTBA-12-XX Termination fiber box, unloaded, 12fibers for XX

FTBB-08-XX Termination fiber box, unloaded, for XX



Page 35



Page 37

FIBER PRODUCTS



FST1-12



FST2-12



FST3-12



FST3-24



FST4-12



FST5-12



FTBC24



FTBA-12-00



FTBB-08-00



FIBER CLOSURE



△ FTBP1-00



△ FTBP2-00

- Suitable for aerial and underground.
- Material: high-strength engineering plastic (PC).
- Environment temperature: -40°C ~+65°C
- Order information:
- * "00" = required fibers. (12=for 12fibers; 24=for 24fibers....).

Fiber Termination Box

- Capacity: 12 / 24 / 36 / 48fibers

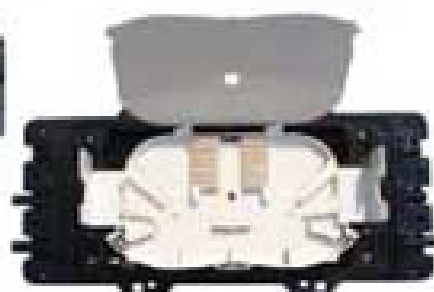
Part No. Description

FTBP1-00 Fiber termination box, for 00-fiber, size: 250x180x50mm.

FTBP2-00 Fiber termination box, for 00-fiber, size: 323x202x86mm.



△ FCH1-00



Horizontal Fiber Closure

- Capacity: 12 / 24 / 36 / 48 / 72 / 96 fibers.
- Suitable dia of fiber cable: 8-20mm
- Product weight: approximately 2.5kgs
- Size: 370x185x145mm; 2-in / 2-out design

Part No. Description

FCH1-00 Horizontal fiber closure, for 00-fibers.



△ FCH2-00



Horizontal Fiber Closure

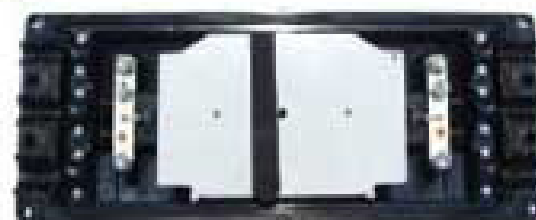
- Capacity: 12 / 24 / 48 / 64 / 96fibers
- Suitable dia of cable 8-22mm
- Product weight: approximately 2.5kgs
- Size: 485x180x122mm; 2-in / 2-out design. (3-in/3-out is optional)

Part No. Description

FCH2-00 Horizontal fiber closure, for 00-fibers.



△ FCH3-00



Horizontal Fiber Closure

- Capacity: 12 / 24 / 48 / 64 / 96fibers.
- Size: 450x216x110mm; 2-in / 2-out design (3-in/3-out is optional)

Part No. Description

FCH3-00 Horizontal fiber closure, for 00-fibers.



EXCELLENT FIBER SOLUTION

- Suitable for aerial and underground.
- Material: high-strength engineering plastic.
- Environment temperature: -40°C ~+65°C
- Order information:
- * "00" = required fibers. (12=for 12fibers; 24=for 24fibers....).

Vertical Fiber Closure

- Capacity: 12 / 24 / 36 / 48 / 64 / 96-fibers.
- Suitable dia of cable 8-18mm
- Product weight: approximately 2.5kgs
- Size: length: 410mm, Dia: 140mm. 2-in / 2-out design

Part No. Description

FCV1-00 Vertical fiber closure, for 00-fibers.



△ FCV1



Vertical fiber splice case, Length: 485mm, Dia: 240mm

- Capacity: 12 / 24 / 48 / 64 / 96 / 126 / 144-fibers
- Suitable dia of cable 8-40mm
- Product weight: approximately 3kgs
- Size: length: 480mm, dia: 240mm.

Part No. Description

FCV2-00 Vertical fiber closure, for 00-fibers.



△ FCV2



Vertical Fiber Closure

- Capacity: 48 / 64 / 96 / 126 / 144 / 192 ... / 288-fibers
- Suitable dia of cable 8-40mm
- Product weight: approximately 4kgs
- Size: length: 500mm, dia: 250mm.

Part No. Description

FCV3-00 Vertical fiber closure, for 00-fibers.

NEW



△ FCV3

NEW



△ FBSCV7

Horizontal Cable Closure, Length: 503mm, Dia: 265mm

- Size of hole: -for copper cable: 7/8"; -for fiber cable: 1/2"
- Size of closure: 200x100x56mm.

Part No. Description

FBSCV7 Splice case.





FIBER RACK MOUNT PANEL



△ FRP1-1-24-FC-B

△ FRP1-1-24-ST-B



△ FRP2-2-48-SC-B

△ FRP2-1-24-ST-B



△ FRP3-1-24-ST-I



△ FRP4-1-24-FC-B

△ FRP4-2-48-SC-B



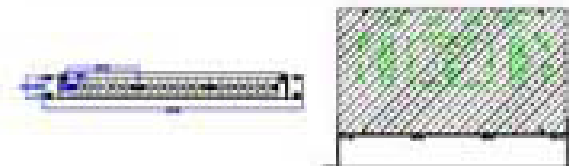
△ FRP5-1-24-SC-B

- Material: Cool Rolled Steel, Powder coat finished.
- Assemble with fiber adaptor and fiber pigtail is optional.
- Order information:
 - "@": 1 or 2. (1=simplex; 2=duplex.)
 - "00": numbers of fiber. (12=12fibers; 24=24fibers; 48=48fibers.)
 - "XX": for type of fiber adaptor—for SC/LC/FC/ST.
 - "Z": color. (B=black; G=gray; I=ivory)

Part No.	Description
Capacity: 12/24/48/96 fibers	
FRP1-@-00-XX-Z	Fiber rack mount panel, 00fiber, for @, XX, Z.

Part No.	Description
Capacity: 12/24/48/96 fibers	
FRP2-@-00-XX-Z	Fiber rack mount panel, 00fiber, for @, XX, Z.

Part No.	Description
The front frame is designed in three-units.	
Each unit for SC/FC/LC/ST is optional.	
Capacity: 12/24/48/96 fibers	
FRP3-@-00-XX-Z	Fiber rack mount panel, 00fiber, for @, XX, Z.



Part No.	Description
Capacity: 12/24/48/96 fibers	
FRP4-@-00-XX-Z	Fiber rack mount panel, 00fiber, for @, XX, Z.



Part No.	Description
Capacity: 12/24/48/96 fibers	
FRP5-@-00-XX-Z	Fiber rack mount panel, 00fiber, for @, XX, Z.



Page 30



Page 31

EXCELLENT FIBER SOLUTION

- Material: Cool Rolled Steel, Powder coat finished.
- Assemble with fiber adaptor and fiber pigtail is optional.
- Order information:
 - "@": 1 or 2. (1=simplex; 2=duplex.)
 - "00": numbers of fiber. (12=12fibers; 24=24fibers; 48=48fibers.)
 - "XX": for type of fiber adaptor—for SC/LC/FC/ST.
 - "Z": color. (B=black; G=gray; I=ivory)

Part No.	Description
Capacity: 15/24/32/48/96 fibers	
FRP6-@-00-XX-Z	Fiber rack mount panel, 00fiber, for @, XX, Z.

Part No.	Description
With cover on the front.	
Capacity: 12/24/48/96 fibers	
FRP7-@-00-XX-Z	Fiber rack mount panel, 00fiber, for @, XX, Z.

Fiber Rack Mount Unit	
*Mounted with FRP1-12fibers splice tray.	
*Capacity: 12/ 24/ 36/ 48/ 72 fibers.	
Part No.	Description
FRPU1-00	Fiber rack mount unit, 00fiber.
FRPU1-@-00-XX-Z	Fiber wall mount unit, 00fiber, for @, XX, Z.

Fiber Rack Mount Unit	
*Mounted with FST12-fiber splice tray.	
*Capacity: 12/ 24/ 36/ 48/ 72 fibers.	
Part No.	Description
FRPU2-00	Fiber rack mount unit, 00fiber.
FRPU2-@-00-XX-Z	Fiber wall mount unit, 00fiber, for @, XX, Z.

Fiber Cable Management Panel	
*Size: 1Ux10"	
Part No.	Description
FCM1-SC	Fiber cable management panel, for SC, simplex.
FCM1-LC	Fiber cable management panel, for LC, duplex.
FCM1-FC	Fiber cable management panel, for FC.
FCM1-ST	Fiber cable management panel, for ST.



Page 42



Page 43

FIBER RACK MOUNT PANEL



△ FRP6-1-16-ST-B

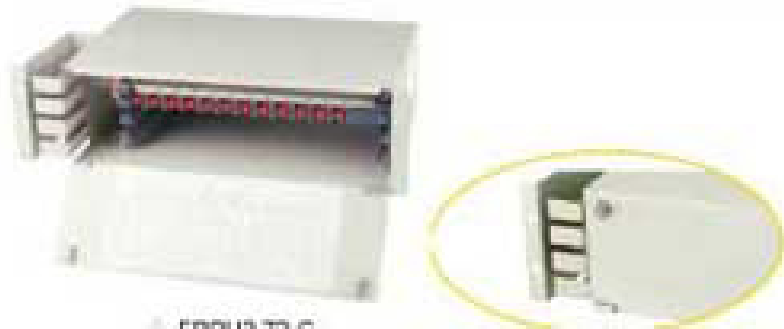


△ FRP7-1-24-SC-G



△ FRPU1-72-G

△ FRPU1-24-G



△ FRPU2-72-G



△ FCM1-SC

△ FCM1-ST

△ FCVLC

△ FCVSC

△ FCVFC



FIBER WALL MOUNT CABINET



△ FWS1-series

- Material: Cold Rolled Steel, Powder coat finished.
- Order information:
 - "@": 1 or 2, (1=simplex; 2=duplex.)
 - "00": numbers of fiber. (12=12fibers; 24=24fibers; 48=48fibers.
 - "XX": for type of fiber adaptor—for SC/LC/FC/ST.
 - "E": color. (B=black; G=gray; I=ivory)

Fiber Wall Mount Box

Capacity: 8/ 12/ 24/ 48-fibers

Part No. Description

FWS1-@-00-XX-E Fiber wall mount cabinet, 00fiber, for @, XX, #



△ FWE1-series

Fiber Wall Mount Cabinet

- with one-door design.
- Capacity: 12/ 24/ 36/ 48fibers.
- Can be turn-out for easy installation.

Part No. Description

FWE1-@-00-XX-E Fiber wall mount cabinet, 00fiber, for @, XX, #



△ FWE2 series

Fiber Wall Mount Cabinet

- With one doors.
- Capacity: 12/ 24/ 36/ 48fibers.

Part No. Description

FWE2-@-00-XX-E Fiber wall mount cabinet, 00fiber, for @, XX, #



△ FWE3-series

Fiber Wall Mount Cabinet

- with double doors.
- Capacity: 12/ 24/ 36/ 48fibers.

Part No. Description

FWE3-@-00-XX-E Fiber wall mount cabinet, 00fiber, for @, XX, #



Page 33



Page 30

Fiber Wall Mount Enclosure

Material: Sheet Molding Compound (SMC)

Environment Temperature: -40 C~+65 C.

Order information:

"@"= 1 or 2, (1=simplex; 2=duplex.)

"00": numbers of fiber. (12=12fibers; 24=24fibers; 48=48fibers.

"XX": for type of fiber adaptor—for SC/LC/FC/ST.

Fiber Wall Mount Enclosure

Capacity: 12/ 24/ 36/ 48 fibers.

Part No. Description

FWE1-@-00-XX Fiber wall mount enclosure, for @, 00fibers,XX.

FIBER ENCLOSURE



△ FWE1-series



△ FWE2 series

Wall mounting fiber enclosure

Capacity: 24fibers for ST/FC; 48fibers for SC/LC.

Part No. Description

FWE2-@-00-XX Fiber wall mount enclosure, for @, 00fibers,XX.

Fiber optic enclosure

Capacity: 96 / 144 / 288 / 576 Fibers

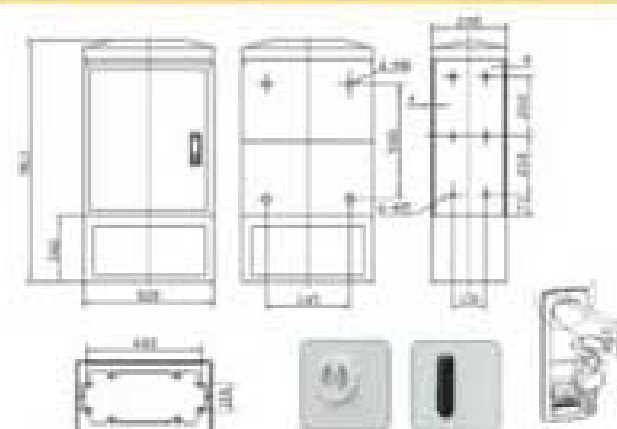
Part No. Description

FEP-96 Fiber enclosure 96fibers

FEP-144 Fiber enclosure 144fibers

FEP-288 Fiber enclosure 288fibers

FEP-576 Fiber enclosure 576fibers



△ FEP series



FIBER ENCLOSURE



FEM1 Series

ODF has adopted integral splice and distribution module, compact structure and high density. It is made of quality-strong steel with powder coat finish. It is suitable for local port or optic distribution port in the fiber solution. The equipments in the frame are designed modularly, equipped arbitrarily and installed easily. The unique design prevent the fiber from unexpected damage.

Fiber Enclosure

Part No.	Description
FEM1-96	Fiber optic enclosure 96fibers
FBE1-144	Fiber optic enclosure 144fibers

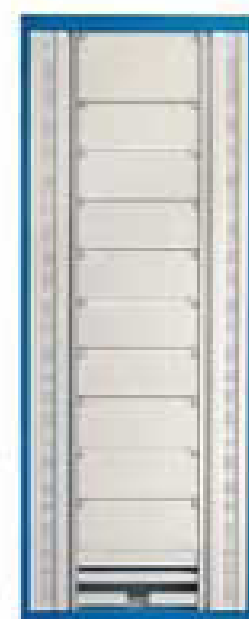
The distribution and exchange of fiber is compatible for whole front operation. The fix, stripping, grounding of cable can be made together or separately at each son frame.

The frame has double doors at the front with two removable side plank, which is easy to open, disassemble, put side-by-side or back-to-back, with reliable grounding system.

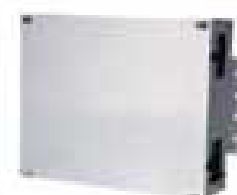
The management, splicing marks and optic line marks is clear to operate.

Enough fiber storage space can ensure the fiber bending radius is more than 40mm at any position.

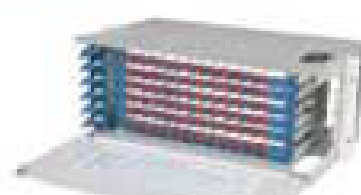
Part No.	Description
FEM2-576	Fiber enclosure 576-fibers, size: 3000x840x300mm
FEM2-648	Fiber enclosure 648-fibers, size: 2200x840x300mm
FEM2-792	Fiber enclosure 792-fibers, size: 2600x840x300mm



FEM2 series



Cable Stripping Unit



Fiber Distribution Unit-72fibers

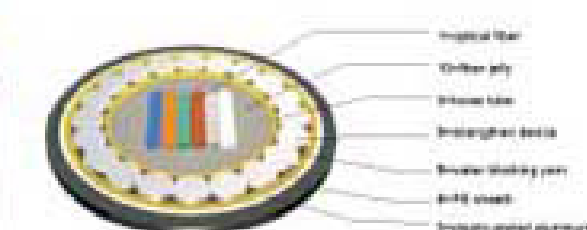
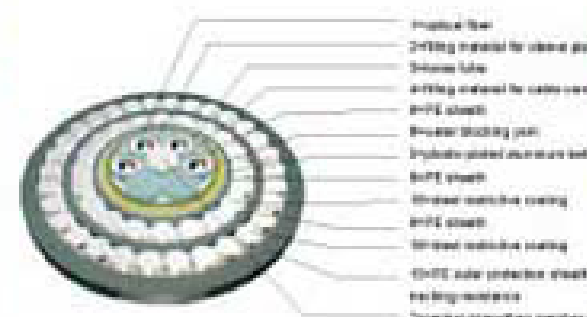


Fiber Splicing Tray 12-fibers loaded with adaptors and pigtail



- Operating wavelength at 850nm, 1310nm and 1550nm.
- Application: 100base-T/Gigabit Ethernet, ATM, Token-ring...

- Optical fiber
- Filling material for sleeve pipe
- Inner tube
- Filling material for cable core
- Plastic-plated aluminum belt
- PE sheath
- Central strengthen member (FRP)
- Water blocking yarn
- Strengthen device
- Fiber jelly



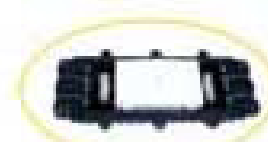
- Composite steel plastic belt
- Low smoke zero-halogen fire-retardant sheath
- PE inner protection sheath
- Kevlar aromatic polyamide fibrous
- PE outer protection sheath tracking resistance
- Steel restrictive coating
- Buffer
- Non-metallic strength member
- Jacket

Part No.	Fiber Size	Max Fiber per tube	Construction
GYTA	2-144	12	1/2/3/4/5/6/7
GYTS	2-144	12	1/2/3/4/5/6/7
GYTS3	2-144	12	1/2/3/4/5/7/8/13/15
GYTA33	2-144	12	1/2/3/4/5/7/8/13/15

Part No.	Fiber Size	Max Fiber per tube	Construction
GYXTW	2-12	12	1/2/3/5/6/8/9
GYXTY	2-12	12	1/2/3/4/6/9
GYXTS	2-12	12	1/2/3/4/5/6/8/9
GYTY	2-144	12	1/2/3/4/6/7
GYTTY	2-144	12	1/2/3/4/6/7/8

Part No.	Fiber Size	Max Fiber per tube	Construction
GYTA33	2-96	16	1/2/3/4/5/7/13/15/16
GYTA333	2-96	16	1/2/3/4/5/6/7/15/16/18
GYTA333	2-96	16	1/2/3/4/5/6/6/7/8/15/16/18
GYTA333	2-96	16	1/2/3/4/5/6/6/7/8/15/16/18
GYTS33	2-96	16	1/2/3/4/5/7/13/15/16
GYTS333	2-96	16	1/2/3/4/5/6/7/15/16/18
GYTS333	2-96	16	1/2/3/4/5/6/7/8/15/16/18
GYTS333	2-96	16	1/2/3/4/5/6/6/7/8/15/16/18

Part No.	Fiber Size	Max Fiber per tube	Construction
GYDTA	80-648	12	1/2/3/4/5/6/7/8
GYDTS	80-648	12	1/2/3/4/5/6/7/8
GYDKTA	8-144	12	1/3/5/6/8/9/10
GYDKTS	8-144	12	1/3/5/6/8/9/10
GYDKTW	8-432	24	1/3/5/6/8/9/10





FIBER CABLE

- Operating wavelength at 850nm, 1310nm and 1550nm.
- Application: 100base-T/Gigabit Ethernet, ATM, Token-ring...

1-optical fiber
2-filling material for sleeve pipe
3-loose tube
4-filling material for cable core
5-plastic-plated aluminum belt
6-PE sheath
7-central strength member (FRP)
8-water blocking yarn
9-strength device
10-fiber jelly
11-composite steel plastic belt
12-low smoke zero-halogen fire-retardant sheath
13-PE inner protection sheath
14-heavy aromatic polyamide fibrous
15-PE outer protection sheath tracking resistance
16-steel restrictive coating
17-buffer
18-non-metallic strength member
19-jacket

Part No.	Fiber Nos.	Maxi fiber per tube	Construction
GYDXTZW	2-216	12	1/3/8/10/11/12

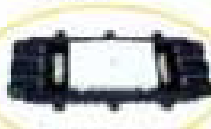
Part No.	Fiber Nos.	Maxi fiber per tube	Construction
ADSS-AT(PE)XXB1-XXN	2-24	4	1/3/4/7/8/10/10/13/14/15
ADSS-AT(PE)XXB1-XXN	26-36	6	1/3/4/7/8/10/10/13/14/15
ADSS-AT(PE)XXB1-XXN	38-72	12	1/3/4/7/8/10/10/13/14/15
ADSS-AT(PE)XXB1-XXN	74-96	16	1/3/4/7/8/10/10/13/14/15

Part No.	Fiber Nos.	Maxi fiber per tube	Construction
GYTC85	2-36	5	1/2/3/4/5/6/7/9
GYTC85	38-72	6	1/2/3/4/5/6/7/9
GYTC8A	2-36	5	1/2/3/4/5/6/7/9
GYTC8A	38-72	6	1/2/3/4/5/6/7/9

Part No.	Fiber Nos.	Maxi fiber per tube	Construction
GJFJV	1	1	1/17/18/19
GJFJZY	2	1	1/17/18/19
GJFJBV	2	1	1/17/18/19
GJFJBZY	2	1	1/17/18/19
GJPFJV	4-12	1	1/17/18/19
GJPFJZY	16-96	12	1/5/9/13/15/19
GJDFJV	2-4	1	1/18/19
GJDFJZY	4-12	1	1/18/19



Page 37



Page 38

TELECOMMUNICATION



- Support to main distribution frame (MDF) system.
- MDF frame, protection terminal block, terminal testing block, grounding setting, column alarm unit, stepladder and insertion tools are available.
- Support to DDF system
- Mainly used between digital multiplexers between digital multiplexer and exchange equipment. Carry out the functions of cables connection, cable patching and test of loops that transmitting digital signals.





MODULES



△ TMKD-10



△ TMKPD-10



△ TMKC-10



△ TMKPC-10



△ TMKE-10



△ TMKEP-10



△ TMKS10



△ TMKSP10



△ TMKS-10



△ TMKS-8

Disconnection module

- Contain 2pcs contacts normally closed
- Has advantage of individual pair disconnection
- Four wire test access.

Part No.	Description
TMKD-10	10pair Disconnection module
TMKD-08	8pair Disconnection module
TMKD-05	5pair Disconnection module
TMKPD-10	10pair Profile disconnection module

Connection module

- Contain 1pc contact
- Providing a continuous link between wiring

Part No.	Description
TMKC-10	10pair Connection module
TMKC-08	8pair Connection module
TMKC-05	5pair Connection module
TMKPC-10	10pair Profile connection module

Earth module

- With 1pc contact and earthing rail
- Accommodating up to 2 identical wires per slot

Part No.	Description
TMKE-10	10pair Earth module
TMKEP-10	10pair Profile earth module

Switching module

- Have 2pcs contacts normally open
- Allow connection by 4pole bridging plugs or test leads or patchcords

Part No.	Description
TMKS10	10pair Switching module
TMKSP10	10pair Profile switching module

Switching module

Part No.	Description
TMKS-10	Highband 10pair module, CAT-5
TMKS-8	Highband 8pair module, CAT-5



Page 67



Page 49

Disconnection module

- with 2pcs wire guides & hinged label holder

Part No.	Description
TKMBD-10	2M Bit Disconnection module kit

Module

Part No.	Description
TMKGD-10	10pair Disconnection module, wire guide
TMKGC-10	10pair Connection module, wire guide

Module

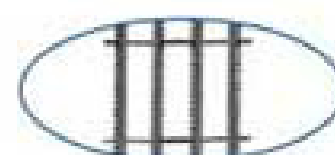
Part No.	Description
TMPSD-10	10Pair disconnection module CAT-5
TMPSC-10	10Pair connection module CAT-5
TMPSP-10	10Pair protection magazine

Disconnection module

Part No.	Description
TMFT-25	25pair FT Module
TMNT-25	25pair Nontel wiring block
TFMF-250	250pair with back frame 295x169x58mm
TFMN-200	200pair with back frame 345x169x58mm

Module

Part No.	Description
TMSC-25	25pair Spin-clutch module
TMKC-20	20pair Connection module (size: 176.5x26x25)

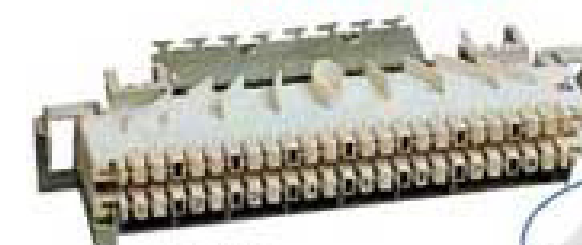


Page 53



Page 51

MODULES



△ TKMBD-10



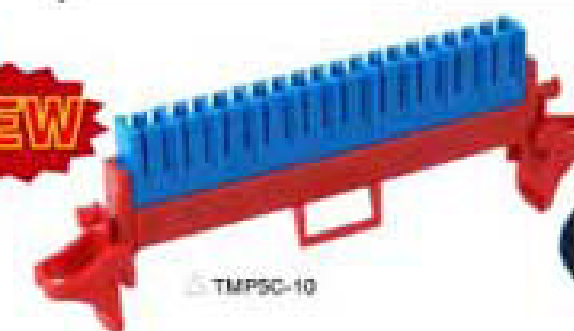
Accessories of module



△ TMKGD-10



△ TMKGC-10



△ TMPSC-10



△ TMPSP-10



△ TMFT-25



Module with frame



△ TMNT-25



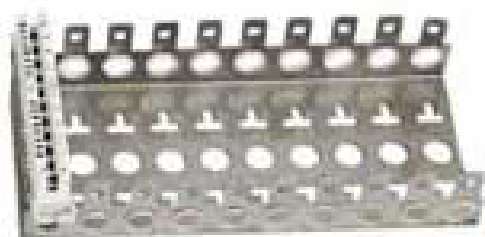
△ TMKC-20



△ TMSC-25



MOUNTING RACK



△ TBMFK Series



Backmount frame

- Suitable for 10pair modules with rubber rings
- More sizes are available on requested

Part No.	Description
TBMFK-01	Backmount frame, 10pair 22.5X105X50mm
TBMFK-03	Backmount frame, 30pair 67.5X105X50mm
TBMFK-05	Backmount frame, 50pair 112.5X105X50mm
TBMFK-10	Backmount frame, 100pair 225X105X50mm

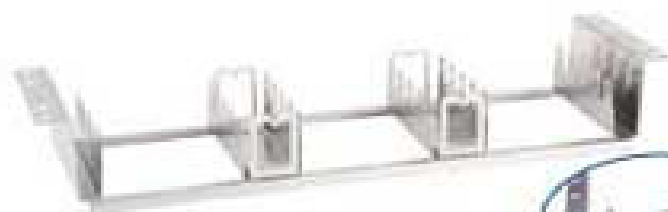
Backmount frame

- 19" Rackmount style, With cable guides
- 150pair / 120pair / 90pairs is optional

Part No.	Description
TBMR1-150	Backmount frame, 150pair, 19"



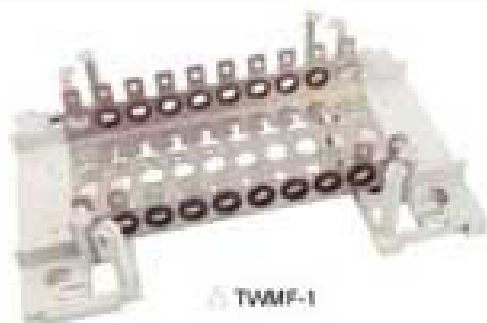
△ TBMR1-150



△ TBMR2A-150



△ TBMR2B-150



△ TWMF-1



△ TWMFP-1

Backmount frame

- Wallmount frame style
- More sizes are available on requested

Part No.	Description
TWMF-1	Backmount frame, 100pair
TWMFP-1	Backmount frame for profile module, 100pair

Mounting frame

- Suitable for Profile module
- More sizes are available on requested

Part No.	Description
TBMFP1-100	100pair Mounting frame
TBMFP3-100	100pair Mounting frame



△ TBMFP1-100



△ TBMFP3-100



Page 67



Page 49

ACCESSORIES



△ TDC-10-02-01

Dust cover

- Can be fitted with protector magazine

Part No.	Description
TDC01	Dust cover, 10Pair module, 25X125X50mm
TDC02	Dust cover, 2x10Pair module, 55X125X50mm
TDC10	Dust cover, 10x10Pair module, 235X125X73mm

Label holder

- Suitable for krone module

Part No.	Description
TL1-10/-05	Hinged label holder, 10pair / 5pair
TL2-10	Hinged label holder, 10pair
TLC1-10	Label holder, 10pair
TLC2-10	Cover of module with label, 10pair



△ TL1-10/-05



△ TLC2-10



△ TL2-10



△ TLC1-10

Label holder

- Suitable for krone module

Part No.	Description
TLC3-10	10pair Label holder
TL3-10	10pair Label holder
TLCP1-10	10pair label holder (for module-TMP5C-10)



△ TLC3-10



△ TLCP1-10



△ TL3-10

Plug

- Prevent disconnection module of particular lines & access to test points
- Marking caps for priority circuit identification on Module

Part No.	Description
TPNK-A/-B	Plug number set, printed "1-0"/"10-100"
TDPK-A/-B	1 Pair Disconnection Plug
TDPK-10	10 Pair Disconnection Plug
TDPK-8	8 Pair Disconnection Plug



△ TDPK-B



△ TDPK-10



△ TDPK-A



△ TPNK-A/-B

Cable Guide

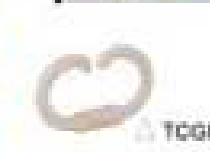
Part No.	Description
TCGR1	50Pair cable guide, 75x48x10mm
TCGS1	50Pair cable guide, 54x48x28mm
TCGR2	50Pair cable guide, 77x45x20mm
TCGS1	100Pair cable guide, 75x59x18mm
TCGS2	500Pair cable guide, 128x87x20mm
TCGL1	Round cable guide, Ø43mm, H: 75mm



Page 44



Page 52



△ TCGR1



△ TCGS1



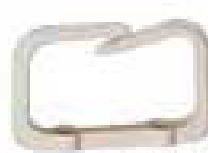
△ TCGR2



△ TCGR1



△ TCGS1



△ TCGS2



PROTECTOR

Protector Magazine—3 pole / 2 pole



△ TPMK3-10



△ TPMK2-10

■ Plug into disconnection and connection krone modules, can be fitted with clear cover or yellow mark.

Part No.	Description
TPMK3-10	10Pair 3pole protection magazine w/o arrester
TPMK3-8	8Pair 3pole protection magazine w/o arrester
TPMK3-6	5Pair 3pole protection magazine w/o arrester
TPMK3-10W	10Pair 3pole protection magazine with arrester
TPMK3-8W	8Pair 3pole protection magazine with arrester
TPMK3-6W	5Pair 3pole protection magazine with arrester

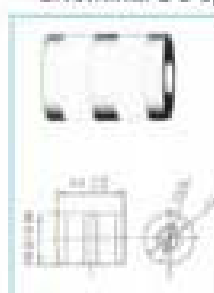
Part No.	Description
TPMK2-10	10Pair 2pole protection magazine w/o arrester
TPMK2-8	8Pair 2pole protection magazine w/o arrester
TPMK2-6	5Pair 2pole protection magazine w/o arrester
TPMK2-10W	10Pair 2pole protection magazine with arrester
TPMK2-8W	8Pair 2pole protection magazine with arrester
TPMK2-6W	5Pair 2pole protection magazine with arrester

Ceramic gas discharge tube—3 pole

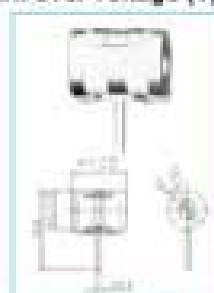
■ With/without tinlead plated leads for soldering for PCB.

■ Nickel plated leads for push fit, with failsafe.

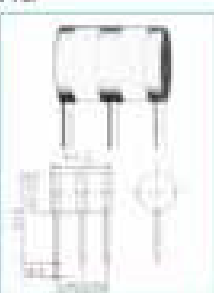
■ Nominal DC spark-over voltage (V) $\pm 20\%$.



△ TGT3R50A-01



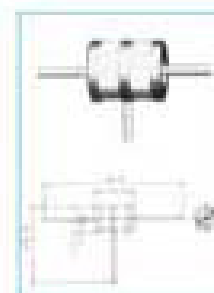
△ TGT3R60B-FS



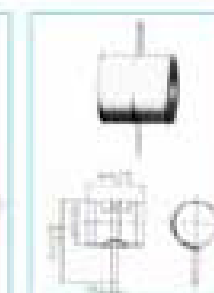
△ TGT3R60C



△ TGT3R60C-FS



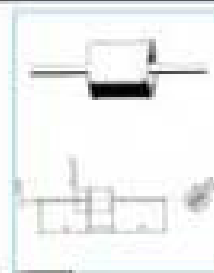
△ TGT3R75C-04



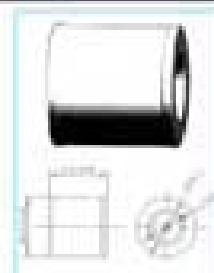
△ TGT3R80B

Part No.	Description	Size (mm)
TGT3R50A	3-Electrode gas tube arrester	7.5X5.0
TGT3R50A-01	3-Electrode gas tube arrester	7.5X5.0
TGT3R60A-01	3-Electrode gas tube arrester	8.0X8.0
TGT3R60B	3-Electrode gas tube arrester	8.5X8.0
TGT3R60B-FS	3-Electrode gas tube arrester	8.5X8.0

Part No.	Description	Size (mm)
TGT3R60C	3-Electrode gas tube arrester	9.0X6.0
TGT3R60C-FS	3-Electrode gas tube arrester	9.0X6.0
TGT3R75B-FS	3-Electrode gas tube arrester	10.1X7.5
TGT3R75C-04	3-Electrode gas tube arrester	11.5X7.5
TGT3R75C-FS	3-Electrode gas tube arrester	10.5X7.5
TGT3R80B	3-Electrode gas tube arrester	10.4X8.0



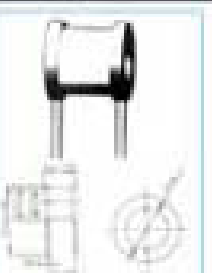
△ TGT2R55B-01



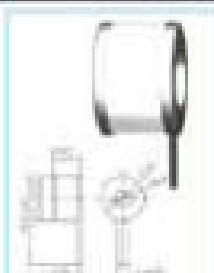
△ TGT2R63A



△ TGT2R65A



△ TGT2R65B



△ TGT2R70B



△ TGT2R80C

Part No.	Description	Size (mm)
TGT2R55C	2-Electrode gas tube arrester	5.5X6.0
TGT2R55B-01	2-Electrode gas tube arrester	5.5X8.0
TGT2R63A	2-Electrode gas tube arrester	6.3X8.0
TGT2R65A	2-Electrode gas tube arrester	6.5X8.0

Part No.	Description	Size (mm)
TGT2R65B	2-Electrode gas tube arrester	5.5X6.0
TGT2R70B	2-Electrode gas tube arrester	7.0X4.4
TGT2R72A	2-Electrode gas tube arrester	8.0X7.2
TGT2R80C	2-Electrode gas tube arrester	8.0X6.0



Page 67



Page 47

TESTING CORD

Protection unit



△ TPTK2



△ TPTK4



△ TPTK5



△ TPTK6



△ TPT3



△ TPT5

■ Protecting from damage caused by overvoltage with a 3-pole GDT with failsafe (Primary circuit) and transient secondary elements (Diodes) for quick responding fine protection. Additional overcurrent protection is realised with reversible thermistors (PTCS) that complete the 3 point protective circuitry.

■ Designed for use in exchanges and terminal equipment in both analogue and ISDN (<2MB PS) systems include earthing rail.

■ High GDT clamping voltage (>250V) in case of power crossing (230V) the fine protecting diodes clamp down preventing the GDT from failing.

Part No.	Description
TPTK2	Protection unit
TPTK4	Protection unit
TPTK5	Protection unit

Part No.	Description
TPTK6	Protection unit
TPT3	Protection unit
TPT5	Protection unit

Telecom. test cord



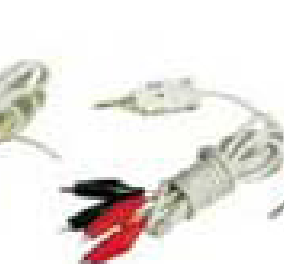
△ TTC22



△ TTC2C



△ TTC2CR



△ TTC44



△ TTC4C



△ TTC4B

■ 2Pole Test Cord, Length: 1.5M

Part No.	Description
TTC22	Test cord 2pole plug to 2pole plug
TTC2C	Test cord 2pole plug to 2 alligator clips
TTC2CR	Test cord 2pole to RJ11 plug & 2-alligator clips
TTC2B	Test cord 2pole plug to 2 banana clips

■ 4Pole Test Cord, Length: 1.5M

Part No.	Description
TTC44	Test cord 4pole plug to 4pole plug
TTC4C	Test cord 4pole plug to 4 alligator clips
TTC4R	Test cord 4pole plug to 6P4C plug
TTC4B	Test cord 4pole plug to 4 banana clips



△ TKER-10



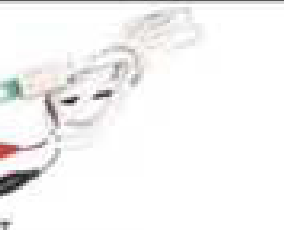
△ TPER-10



△ TTCNT



△ TTC3



△ TTCPT

Earthing rail

Part No.	Description
TKER-10	10Pair earthing rail
TKER-6	8Pair earthing rail
TPER-10	10Pair earthing rail



Page 44



Page 52

Telecom. test cord

■ Cord Length: 1.5M

Part No.	Description
TTCNT	Test cord
TTC3	Test cord
TTCPT	Test cord



DISTRIBUTION BOX



△ TBM-10



△ TBM-20

Distribution box

- For profile module
- With earth clip

Part No.	Description
TBM-10	10 Pair metal distribution box Size: 135x70x60mm
TBM-20	20 Pair metal distribution box Size: 135x130x60mm

Distribution box --indoor

- Key-locking (K) / screw-locking (S) is optional

Part No.	Description
TBIR-30K	30Pair Distribution Box 180X170X75mm
TBIR-50K	50Pair Distribution Box 180X170X75mm
TBIR-100K	100Pair Distribution Box 275X205X105mm
TBIR-30S	30Pair Distribution Box 180X170X75mm
TBIR-50S	50Pair Distribution Box 180X170X75mm
TBIR-100S	100Pair Distribution Box 275X205X105mm

DISTRIBUTION BOX



△ TBIR-100K



△ TBIR-50S



△ TBIM-10



△ TBIM-20

Distribution box

- With disconnection module
- Snap locking type

Part No.	Description
TBIM-10	10Pair distribution box with module snap locking, 165x85x35mm
TBIM-20	20Pair distribution box with module screw locking, 170X120X35mm

Distribution box --indoor

- With removable side and pend panels
- With cable knockouts backframe
- With cable guides & earthing

Part No.	Description
TBIG-50	50Pair Distribution Box 210x160x90mm
TBIG-100	100Pair Distribution Box 320X210X120mm



△ TBIG-100



△ TBIG-50



△ TB131

△ TB132

Distribution box

- Snap locking type

Part No.	Description
TB131	30Pair distribution box 150x105x55mm
TB132	30Pair distribution box, 170x110x80mm (suitable to use with protection magazine)

Distribution box--indoor

- With removable side, pend panels,
- With cable knockouts backframe
- With cable guides and earthing

Part No.	Description
TBIF-30	30Pair distribution box 170X140X75 mm
TBIF-50	50Pair distribution box 209X209X75 mm
TBIF-100	100Pair distribution box 320X215X75 mm

Order information:

- ~"W"~with leaving frame;
- ~"H"~with extra height.



△ TBIF-100



△ TBIF-50W



△ TBIF-50H

Distribution box

- Screw locking type

Part No.	Description
TB133	30Pair distribution box 160x142x45mm
TB134	30Pair distribution box 160x142x53mm

Distribution box --outdoor

- Suitable for outdoor, watertight, key-locking (K) / screw-locking(S) is optional

Part No.	Description
TBO-30K	30Pair distribution box, key-lock style size: 160x115x85mm
TBO-50K	50Pair distribution box, key-lock style, size: 195x195x85mm
TBO-100K	100Pair distribution box, key-lock style, size: 350x190x95mm



Page 44



Page 52



△ TBO-100K



△ TBO-50K





DISTRIBUTION CLOSURE



△ TCI-100

Distribution box

- Metal material: cold rolled steel
- Can be inbuilt in the wall
- With cable guide

■ Part No. Description

TCI-100	100Pair metal distribution box
TCI-200	200Pair metal distribution box
TCI-300	300Pair metal distribution box

Distribution box

- Wall mount style, cable guide, key-locking style

■ Part No. Description

TCW1-100	100Pair distributor box, 380x280x130mm
TCW1-200	200Pair distributor box, 500x450x130mm
TCW1-300	300Pair distributor box, 600x450x130mm
TCW1-400	400Pair distributor box, 700x450x130mm
TCW1-600	600Pair distributor box, 900x450x130mm
TCW1-1000	1000Pair distributor box, 700x1000x130mm
TCW1-1200	1200Pair distributor box, 900x1000x130mm

Distribution box

- Wall mount style, cable guide, key-locking style

■ Part No. Description

TCW2-100	100Pair distributor box, 380x280x130mm
TCW2-200	200Pair distributor box, 500x450x130mm
TCW2-300	300Pair distributor box, 600x450x130mm
TCW2-400	400Pair distributor box, 700x450x130mm
TCW2-600	600Pair distributor box, 900x450x130mm
TCW2-1000	1000Pair distributor box, 700x1000x130mm
TCW2-1200	1200Pair distributor box, 900x1000x130mm

Distribution box

- Wall mount style, cable guide, key-locking style

■ Part No. Description

TCW3-340	340Pair distribution box, size: 1100x280x150mm
TCW3-680	680Pair distribution box, size: 1100x500x150mm
TCW3-1020	1020Pair distribution box, size: 1100x720x150mm



Page 67



Page 49

Distribution Rack

- MDF for 10pair krone profile modules.
- With cable guide & earthing
- Special size is available on requested
- The rack can be combined completely by screws easily

■ Part No. Description

TDR11	800pair distribution frame, size: 2300x250x300mm.
TDR12P	1600pair distribution frame.

Distribution Rack

- MDF for 10pair krone modules.
- With cable guide & earthing
- Special size is available on requested
- The rack can be combined completely by screws easily

■ Part No. Description

TDR22-1380	1380Pair distribution frame size: 1845x500x150mm
TDR22-1600	1600Pair distribution frame size: 2110x500x150mm
TDR23-600	600Pair distribution frame size: 2000x500x300mm
TDR23-800	800Pair distribution frame size: 2400x500x300mm

Distribution Rack

- MDF for 10pair krone modules.
- With cable guide & earthing
- Special size is available on requested
- The rack can be combined completely by screws easily

■ Part No. Description

TDR34-1200	1200Pair distribution frame size: 2000x570x500mm
TDR34-1600	1600Pair distribution frame size: 2400x570x500mm
TDR12-K	1600Pair distribution frame

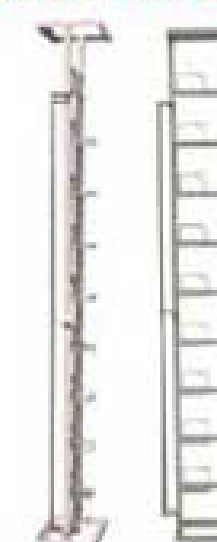


Page 44



Page 52

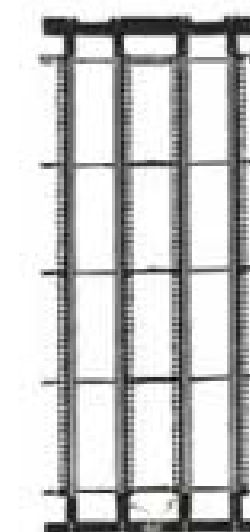
DISTRIBUTION RACK



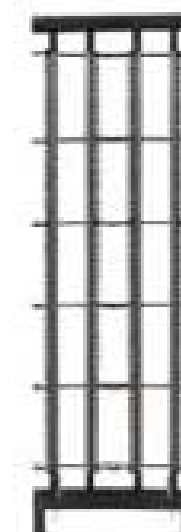
△ TDR11



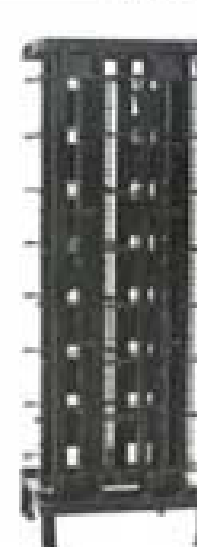
△ TDR12-P



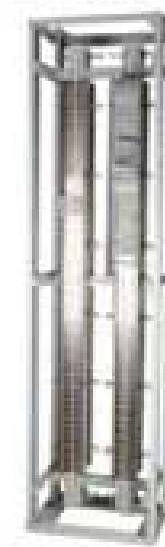
△ TDR22



△ TDR23



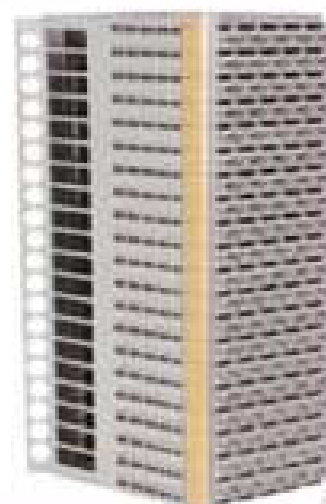
△ TDR34



△ TDR12-K



TERMINAL BLOCK



TB51



TIN3142B

*See Page 67



TPT5

*See Page 49



TTCPT

*See Page 49

- The termination capacity is 100 pairs.
- Each terminal block module is of 10 pairs of termination tags.
- The terminal block consists of 10 rows of terminal block modules. And the terminal blocks are mounted on the mounting rack of MDF.
- The modules can be 10 pairs and 5 pairs.
- The terminal contact elements housed are 2-sided connection, one for termination of cable and other for termination of jumper wire.
- It also has a test access point.

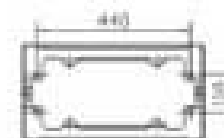
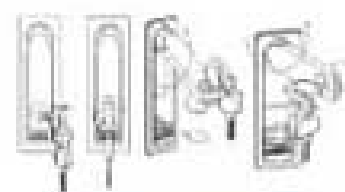
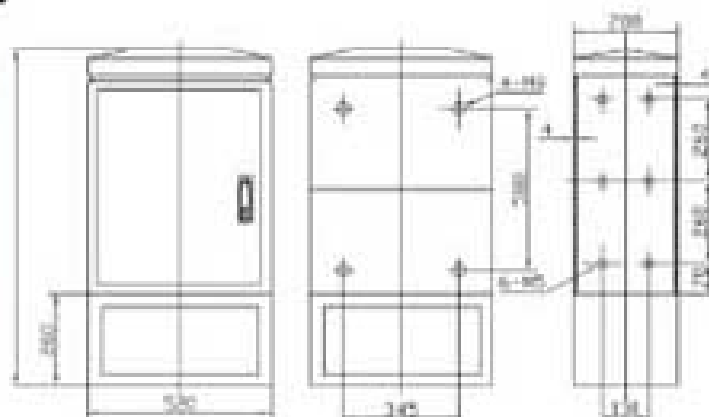
Distribution Enclosure



TSMCE

- For 10pair krone modules.
- Waterproof grade: IP65.
- Environment temperature: -40 C~ +60 C
- With cable guide & cable collar, key-locking style.
- Material: SMC(plastic) / Metal is optional.
- One or two doors is optional
- Size: 1050x800x340mm + 290x760x290mm

Part No	Description
TEM1200	1200-pair enclosure, with mounting frame. (metal)
TEM2400	2400-pair enclosure, with mounting frame. (metal)
TEP1200	1200-pair enclosure, with mounting frame. (plastic)
TEP2400	2400-pair enclosure, with mounting frame. (plastic)



Page 67



Page 49

DDF SYSTEM

- DDF is mainly used between digital multiplexers, between digital multiplexer and exchange equipment, carrying out the functions of cables connection, cable patching and test of loops that transmitting digital signals.

- The solution of high-density.

the space of 2200X600X450 can accommodates 600 system.

- Fully enclosed compatible with open improving the protection and security of cable

- Technical parameters:

Operating temperature: -5°C ~+65°C

Environmental temperature: -40°C ~+85°C

Characteristic impedance: 75Ω

Working speed: 2Mbit/s, 8Mbit/s, 34Mbit/s, 45Mbit/s, 140Mbit/s.

Return loss: ≥20dB(50KHz~233MKz)

Intervening loss: ≤0.3(50KHz~233MKz)

Insulation resistance: ≥1000MQ(500V)

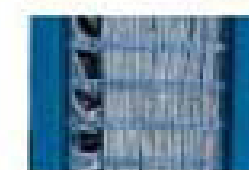
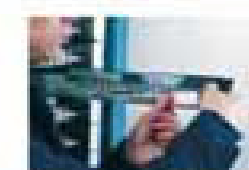
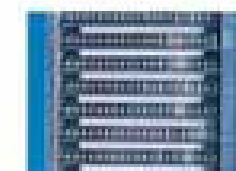
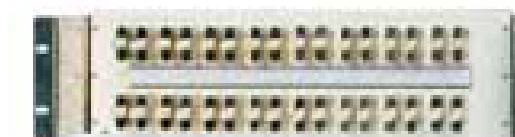
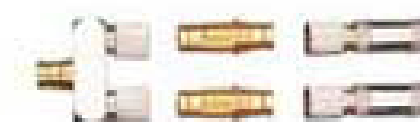
Contact resistance: ≤2.5 MQ(between outer conductors)

≤5 MQ(between inner conductors)

Electric Strength: ≥1000VC(50Hz)min.

Degree of crosstalk: ≥70dB(50KHz~233MHz).

Part No.	Size Information	Capacity
TD05-1140	2000X600X450	1140-pair
TD05-1200	2200X600X450	1200-pair
TD05-1440	2600X600X450	1440-pair



TBD10B



Page 44



Page 52



TELECOM. PRODUCTS

Splice Connector

Drawing	Part No.	Max. Insulation a (mm)	Conductor a (mm)
	T3UY	1.52	0.4-0.7
	T3UR	1.67	0.4-0.9
	T3UG	1.67	0.4-0.9
	T3U1R	2.0-3.3	1.2-1.5
	T3B	1.27	0.32-0.7

Drawing	Part No.	Max. Insulation a (mm)	Conductor a (mm)
	T3UY2	1.52	0.4-0.7
	T3UB	1.27	0.4-0.7
	T3UB2A	2.3	0.9-1.3
	T3UDW	2.0-3.3	0.9-1.3
	T101	1.35	0.4-0.7

Splicing Modules



Part No.	Description
T3SM10	10Pair super-mini splicing module (9700D)
T3SM25D	25Pair splicing module (4000D)
T3SM25G	25Pair splicing module (4000G)

Part No.	Description
T3SM25E	25Pair splicing module (4010E)
T3SMB1	Box for 25pair splicing module (4000DWP)
T3SMB2	Box for 25pair splicing module



Construction material

Part No.	Description
T3PM	Punch Tool Kit
T3SBC	Shield Band Connector (4400-d)

Construction material

Part No.	Description
T3EW	Elastic vinyl wrap (2183)
T3ST	Sealing tape (2800-R)
T3AM	Armorcast material (4560)



Page 45

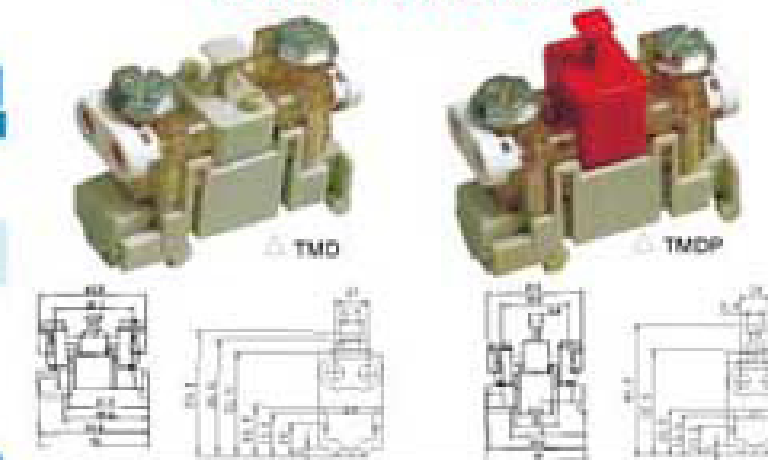


Page 54

DCM PRODUCTS

Drop-wire Connection Module

Part No.	Description
TMD	1Pair drop-wire connection module, (without protector)
TMDP	1Pair drop-wire connection module, (with protector)



Distribution Box for DCM modules

Order information:
 * "-X" = W or P.
 "-W" = with module of TMD; "-P" = with module of TMDP.

Part No.	Description
TBD01	1Pair DCM distribution box
TBD01-X	1Pair distribution box, with X module
TBD02	2Pair DCM distribution box
TBD02-X	2Pair distribution box, with X module
TBD04	4Pair DCM distribution box
TBD04-X	4Pair distribution box, with X module



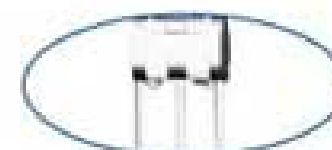
Part No.	Description
TBD10L	10Pair DCM distribution box.
TBD10L-X	10Pair distribution box, with X module
TBD10	10Pair distribution box.
TBD10-X	10Pair distribution box, with X module
TBD20	20Pair distribution box.
TBD20-X	20Pair distribution box, with X module



Part No.	Description
TBD10B	10Pair DCM distribution box.
TBD10B-X	10Pair DCM distribution box, with X module

Distribution Box for 10-pair modules

Part No.	Description
TBB50	50 Pair distribution box



Page 48



Page 51

TOOL

GETEK

EFFECTIVE TOOL & ACCESSORIES

LAN TESTER



△ TTS01

△ TTS06

Part No.	Description
TTS01	For RJ45,RJ12
TTS06	For RJ45,RJ12



△ TTS02

Part No.	Description
TTS02	For RJ45,RJ12,BNC



△ TTS03

Part No.	Description
TTS03	For RJ45,RJ12



△ TTS04

Part No.	Description
TTS04	For RJ45,RJ12,BNC



△ TTS10

Part No.	Description
TTS10	For RJ45,RJ12,BNC,USB



△ TTS12

Part No.	Description
TTS12	5in1(for RJ45,RJ12,BNC,USB,1394)



△ TTS14

Part No.	Description
TTS14	For RJ45, BNC



△ TTS15

Part No.	Description
TTS15	For RJ12,RJ45,BNC (Length the cable size)



△ TTS16

Part No.	Description
TTS16	For RJ12,RJ45,BNC



Page 29



Page 31

NEW

GETEK
Email: getek@getek.cn

LAN TESTER



SCANNER&CUTTER&STRIPPER

CRIMPING TOOL



TT513

Part No.	Description
TT513	Cable scanner



TT513B

Part No.	Description
TT513B	Cable scanner



TT5F1

Part No.	Description
TT5F1	Visual fault locator



TS501A

Part No.	Description
TS501A	Cable stripper
TS501B	Cable stripper



TS332

Part No.	Description
TS332	Cable stripper



TS3M

Part No.	Description
TS3M	For splice connector



TC206

Part No.	Description
TC206	Cable cutter



TSC1

Part No.	Description
TSC1	Cable cutter

TS325

Part No.	Description
TS325	Cable stripper and Crimping

*10AWG-20AWG/2.5-0.8mm
Crimp terminal: 0.3-0.2wire



TS700D

Part No.	Description
TS700D	Cable stripper

*0.5-0.6mm Wire



TS701

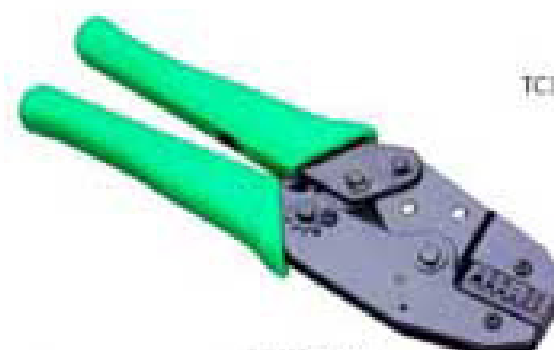
Part No.	Description
TS701	Cable stripper



Page 28



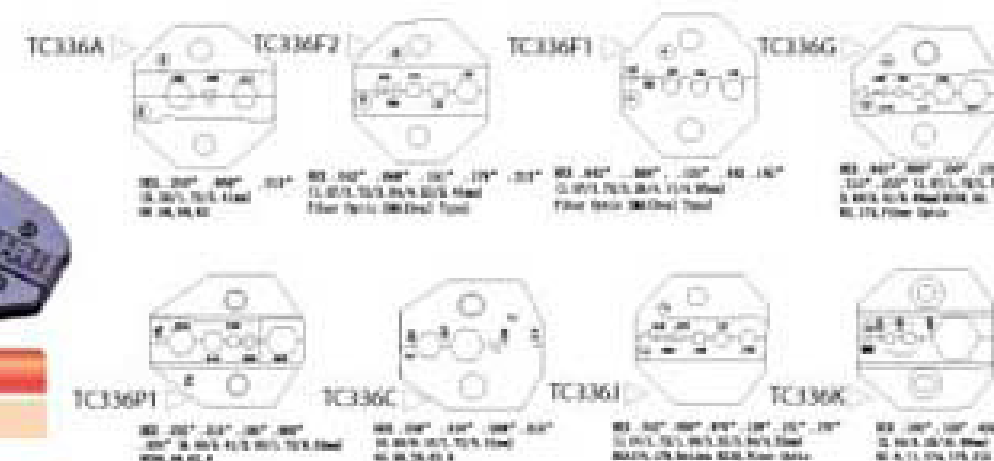
Page 42



TC336FM

Part No.	Description
TC336FM	Crimping tool frame

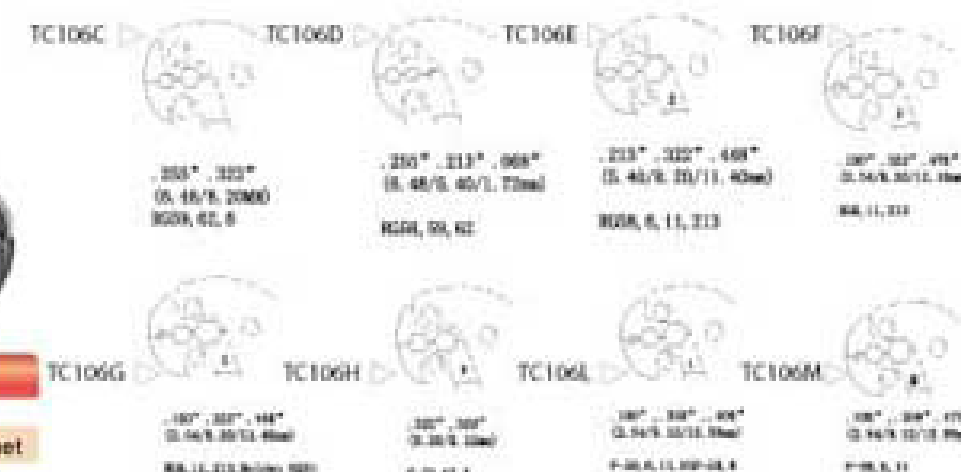
*Die set is interchangeable.



TC106FM

Part No.	Description
TC106FM	Crimping tool frame
TC116FM	Crimping tool frame, with ratchet

*Die set is riveted on tool, unchangeable.



TC5082R

Part No.	Description
TC5082R	Crimping tool (compressed distance 20.30±0.15)

*For "F" connector, RG-58, RG-6



TC102

Part No.	Description
TC102H	Crimping tool (RG-58/52/6)
TC102G	Crimping tool (RG-58/52/6/11)

*For "F" Connector



TC202A

Part No.	Description
TC202A	Crimping Tool

*P-SUB: 26-28AWG wire
*Connectors: 22-26AWG;
14-22AWG wire



TC864R

Part No.	Description
TC864	Crimp tool
TC864R	Crimp tool, ratchet

*For Pipe type terminal
*23AWG-10AWG/0.25-0.8mm



Page 70



Page 83



CRIMPING TOOL

PUNCH-DOWN TOOL



Part No.	Description
TCN2180	For 8P
TCN210C	For 8P

Part No.	Description
TCN568C	For 8P/8P, 2colored handle
TCN568	For 8P/8P

Part No.	Description
TCN315	For 8P/8P/4P
TCN2003	For 8P/8P/4P



Part No.	Description
TCN2101	For 8P, 2colored handle
TCN568R	For 8P/8P

Part No.	Description
TCN500R	For 8P/8P
TCN500R2	For 8P/8P, 2 colored handle

Part No.	Description
TCN200R	For 8P/8P/4P
TCN200R2	For 8P/8P/4P, 2 colored handle



Part No.	Description
TCN808	For 8P

Part No.	Description
TCN376E	For 8P/8P
TCN376M	For 8P/8P

Part No.	Description
TCNK21	For UK plug/8P
TC-214	Crimping tool



Page 28



Page 11



Part No.	Description
TIN318	Insertion tool
TIN3141B	Insertion tool (with stop clip)

Part No.	Description
TIN3141	Insertion tool
TIN3141A	Insertion tool

Part No.	Description
TIN3130	Boot for insertion tool



Part No.	Description
TIN3240	Impact tool
TIN3140	Impact tool

Part No.	Description
TIN110	Impact tool
TIN3540	Impact tool (with 66 blade or 110/88 blade)

Part No.	Description
TIN315DR	Insertion tool 5pair



Part No.	Description
TIN3142 A	Insertion Tool
TIN3142 B	Insertion Tool

Part No.	Description
TIN11	Impact tool
TIN118	Tool For IDC Termination

Part No.	Description
TCT519	Tool for cable tie



Page 44



Page 58



TOOL KIT



TK014

Part No. TK014

21PCS ELECTRIC NET SET

- 1PC Long nose pliers
- 1PC Micro cutting plier
- 1PC Punch down tool
- 1PC Crimping tool (RJ45&RJ12/11)
- 1PC Wire stripper
- 1PC 3MFT tape line
- 1PC Utility knife

- 1PC Wire stripper economy
- 1PC Soldering iron
- 1PC Cable tester
- 1PC Tweezers
- 2PCS Screwdriver 102x75mm(+/-)
- 2PCS Screwdriver 107x100mm(+/-)
- 5PCS RJ-45/8P6C Modular plug
- 1PC Plastic box 315x255x55mm

Part No. TK001

ELECTRIC NET SET

- Modular crimping tool for RJ-45 (Solid plug & Die set interchangeable includes for RJ-45 plug RJ-12, RJ-11 plug, 6PDS/DGFF-BET) plug RG-58, RG-174 and Fiber Optic connector)
- Adjustable impact punch down tool (with 60 and 110 blades)
- Cable cutter or wire diameter up to 10.5mm
- Utility Knife 6.5"
- Diagonal plier 6"
- Long nose plier 6"
- Universal stripping tool 4.5M"
- 25PCS Super torque ratchet driver set includes changeable shank ratchet driver
- Phillips bit shanks #0, 1, 2, 3

- Slotted bit shanks: 1M", 3/16", 1/4"
- Star bit shanks: T10, T15, T20, T25, T37, T30
- Sockets 4, 5, 6, 7, 8, 9, 10, 11, 12, 13mm
- Socket adaptor
- 30W soldering iron
- Desoldering pump
- TPCS folding type hex key wrench
- Utility components storage box (polyester include)
- Digital multimeter with holder
- Multi-Network cable test for UTP
- STPDS56A/TIA-568A/Token ring
- 2PCS removable pellets
- Carrying tool case



Page 63



Page 75

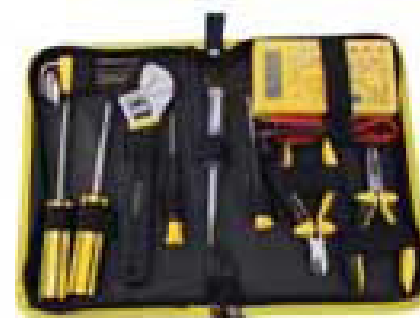
TOOL KIT



TK008W



TK009W



TK015W

TK015W



TK015W

Part No. TK008W

8PCS ELECTRIC NET SET

- 1PC Long nose pliers 4"
- 1PC Diagonal pliers 4"
- 1PC Electrical test pen
- 2PCS Precise revolver (-12.4(+)) PHO
- 1PC Impact and punch down tool
- 1PC Coaxial stripping tool
- 1PC Modular crimping tool

Part No. TK009

8PCS HOMEOWNER'S SET

- 1PC Combination pliers 7"
- 1PC Adjustable wrench 8"
- 2PCS Screwdriver 100x6(+/-)
- 1PC Utility knife
- 1PC Electrical test pen
- 1PC Steel measuring tape 2m
- 2PCS Precise revolver (-12.4(+)) PHO

Part No. TK015W

15PCS ELECTRIC NET SET

- 1PC Multimeter
- 5PCS Hex key 1.5-6mm
- 1PC Electrical test pen
- 1PC Long nose pliers 4"
- 1PC Diagonal pliers 4"
- 2PCS Screwdriver 100x6(+/-)
- 2PCS precise revolver (-12.4(+)) PHO
- 1PC Adjustable wrench 8"
- 1PC Cloth bale

Part No. TK015W

- 1PC Cable tester
- 2PCS Screw driver
- 1PC Modular crimps, Strips& Cuts Tool
- 1PC Combination pliers 7"
- 1PC Diagonal Cutter pliers 7"
- 1PC Utility knife
- 1PC Electrical test pen
- 1PC Impact and Punch down tool
- 1PC Steel measuring tape 5m
- 1PC Cable stripper
- 1PC Multimeter

Part No. TK015W

- 1PC Cable tester
- 2PCS Screw driver
- 1PC Modular crimps, Strips& Cuts Tool
- 1PC Combination pliers 7"
- 1PC Diagonal Cutter pliers 7"
- 1PC Utility knife
- 1PC Electrical test pen
- 1PC Impact and Punch down tool



Page 28



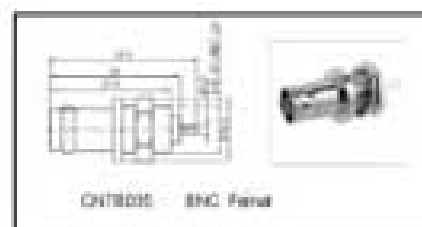
Page 11



CONNECTOR



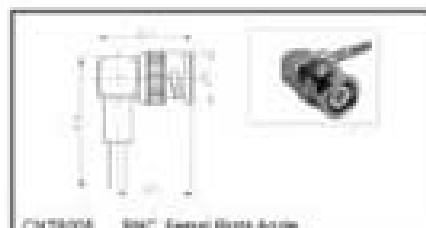
CNT8077 BNC Male To Double BNC Female



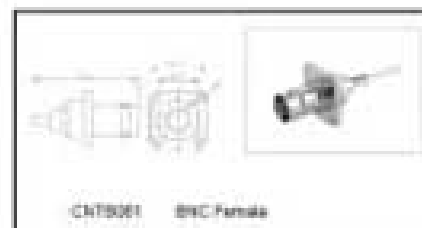
CNT8085 BNC Female



CNT8005 BNC Male Quick Crimp



CNT8006 BNC Female Right Angle



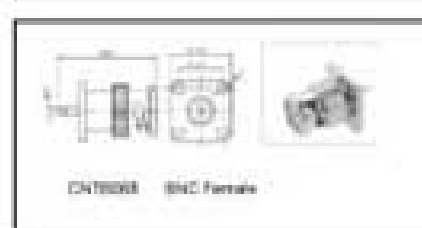
CNT8001 BNC Female



CNT8002 BNC Male For Flexible Cable



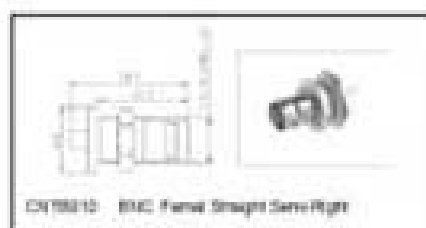
CNT8007 BNC Male For Flexible Cable



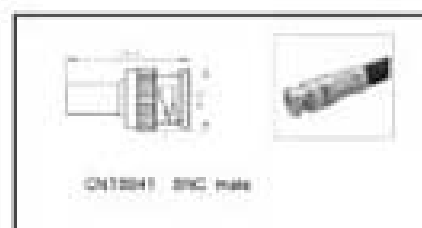
CNT8008 BNC Female



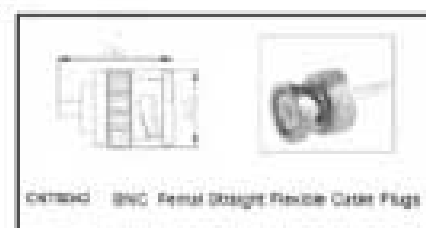
CNT8009 BNC Male Right Angle



CNT8010 BNC Female Straight Servo Right



CNT8041 BNC Male



CNT8040 BNC Female Straight Flexible Cable Plug



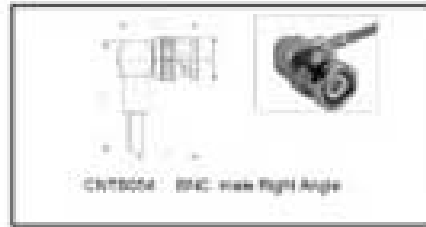
CNT8000 BNC Male Right Angle



CNT8052 BNC Right Angle Adapter



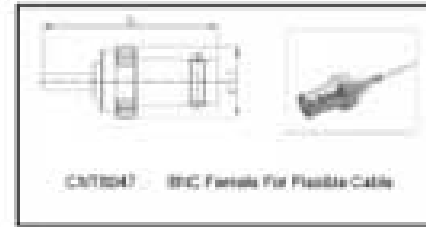
CNT8053 BNC Male Flexible



CNT8054 BNC Male Right Angle



CNT8046 BNC Male Right Angle



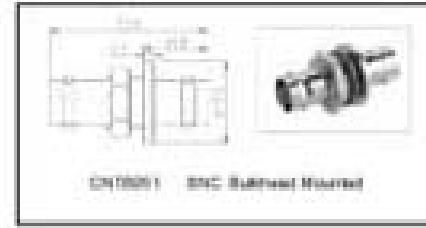
CNT8047 BNC Female For Flexible Cable



CNT8048 BNC Adapter



CNT8049 BNC Female



CNT8051 BNC Bulkhead Mounted

CONNECTOR



CNT8081 F FEMALE TO F MALE



CNT8019 F CONNECTOR WATER PROOF



CNT8002 F Female



CNT8013 F WITH ATTACHED CRIMP RING



CNT8008 F FEMALE CONNECTOR



CNT8012 F CONNECTOR SC WATER



CNT8078 F FEMALE TO RCA FEMALE



CNT8015 F MALE MOLDED



CNT8079 F FEMALE TO 35mm MONO PLUG



CNT8003 F CONNECTOR



CNT8071 PAL MALE TO F FEMALE



CNT8077 F CUT MALE TO F FEMALE



CNT8005 F CONNECTOR



CNT8001 F FOUR FEMALE



CNT8073 PAL FEMALE TO F FEMALE



CNT8006 F MALE TO MALE



CNT8002 F THREE FEMALE



CNT8009 F FEMALE BULKHEAD



CNT8007 F MALE



CNT8004 F FEMALE TO F FEMALE



CNT8008 F MALE TERMINATOR (DUMMY LOAD)



CNT8004 F CONNECTOR TP SOCKET



CNT8004 F MALE TWIST ON



CNT8004 F MALE TWIST ON



CNT8006 F MALE RIGHT ANGLE



CNT8007 F MALE RIGHT ANGLE



CNT8008 F FEMALE



CNT8009 F MALE



CNT8002 THC MALE QUICK CRIMP TYPE



CNT8008 THC MALE TO BNC FEMALE



CNT8008 THC MALE TO F FEMALE



CNT8006 PAL FEMALE (GOLD)



CNT8023 PAL FEMALE METAL (TV JACK)



CNT8018 UHF MALE TO BNC FEMALE



CNT8001 PAL MALE METAL (TV PLUG)



CNT8004 N FEMALE TO F MALE



CNT8147 DOUBLE RCA PHONE PLUG



CNT8012 BNC MALE TWIST ON



CNT8000 BNC MALE QUICK CRIMP



CNT8001 DOUBLE BNC FEMALE



CNT8000 BNC FEMALE TWIST ON



CNT8000 BNC THREE FEMALE





POP-UP SOCKET



Floor Socket with unloaded adaptor plate
Variety of adaptor plate is for different modular jacks

Pop-up Style: Square

Size: 120X120mm

Brass / AL / Zin-Al Cover

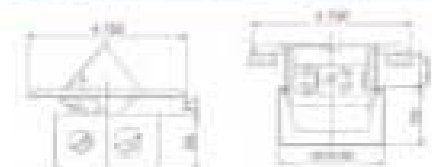
Part No.	Description
FLS1FB	Floor Socket Brass cover
FLS1FA	Floor Socket AL cover
FLS1FZ	Floor Socket Zin-Al cover



Pop-up Style: Round 120mm

Brass / Stainless steel / AL / Zin-Al Cover

Part No.	Description
FLS2YB	Floor Socket Brass cover
FLS2YS	Floor Socket Stainless Steel cover
FLS2YA	Floor Socket AL cover
FLS2YZ	Floor Socket Zin-Al cover

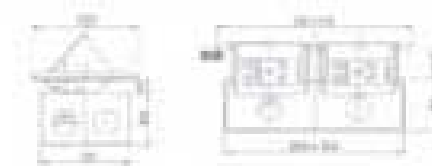


Pop-up Style: Square

Size: 220X120mm

Brass / AL / Zin-Al Cover

Part No.	Description
FLS3FB	Floor Socket Brass cover
FLS3FS	Floor Socket Stainless Steel cover



FLS3FB

Function Accessories



Page 3



Page 29

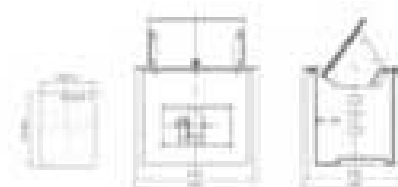
DESK SOCKET

Easy access to connector.
Durable pneumatic movement and mechanical latching mechanism
Surface top available in variety of finish: black or silvery color brushed aluminum

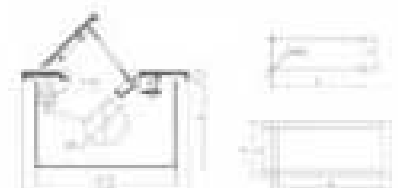
Part No.	Description
D2M404FR	Desktop Socket
D2M401EU	Desktop Socket
D2M403	Desktop Socket
D2M401AU	Desktop Socket



Part No.	Description
D2M305EU	Desktop Socket
D2M301	Desktop Socket
D2M301EU	Desktop Socket



Part No.	Description
D2M312	Desktop Socket
D2M801	Desktop Socket



D2M312

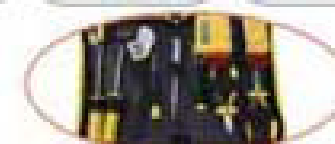


D2M801

Function Accessories



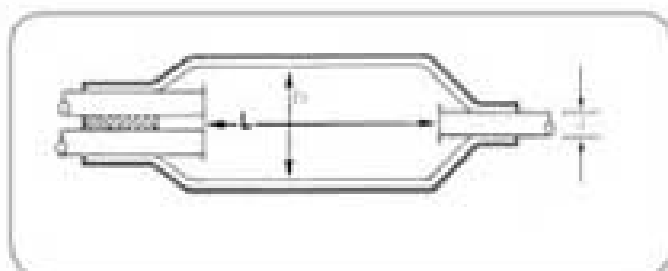
Page 75



Page 89



HEAT SHRINKABLE SLEEVE



Part No.	Original Jacket D(8mm)	Shrink Jacket d(8mm)	Length Jacket L(mm)	Capacity for Cable(per)
RSHF22+8-250	22	8	250	10-15
RSHF32+11-250	32	11	250	20-30
RSHF32+11-300	32	11	300	20-30
RSHF42+15-300	42	15	300	50-100
RSHF42+15-350	42	15	350	50-100
RSHF42+15-500	42	15	500	50-100
RSHF52+18-400	52	18	400	100-150
RSHF52+18-500	52	18	500	100-150
RSHF62+22-300	62	22	300	150-200
RSHF62+22-500	62	22	500	150-200

Part No.	Original Jacket D(8mm)	Shrink Jacket d(8mm)	Length Jacket L(mm)	Capacity for Cable(per)
RSHF43+8-150	43	8	150	10-15
RSHF43+8-300	43	8	300	10-15
RSHF55+11-150	55	11	150	20-30
RSHF55+11-300	55	11	300	20-30
RSHF75+15-250	75	15	250	50-100
RSHF75+15-300	75	15	300	50-100
RSHF92+20-300	92	20	300	100-200
RSHF92+20-350	92	20	350	100-200
RSHF100+25-300	100	25	300	200-300
RSHF75+15-400	75	15	400	50-100

Technication:

Items	Performance
1. Normal temperature Sealing performance	Keep pressure 3 hours does not decrease in the entire building.
2. Temperature cycling	(-30~+60)±2°C high and low temperature residence time is not less than 4 hours, 12 hours per cycle, for 10-cycles. The sealing performance meet the requirements.
3. High temperature Sealing performance	After keep 168 hours under temperature 60±2°C. The sealing performance meet the requirements.
4. Axial tension	Axial tension Di45X1000N, the largest axial tension is 1000±10N, holding after 24 hours. The sealing performance meet the requirements.
5. Bending	Cable bending of 90°C, maximum stress application is 500N after 2cycle. The sealing performance meet the requirements.
6. Cable deflection	Cable deflection of 90°C, maximum stress application is 50N/m after 2cycle. The sealing performance meet the requirements.
7. Static load	Load of 1000±10N, Round briquette area of 5cm², keeping for 5 minutes, press up and down each time. The sealing performance meet the requirements.
8. Low temperature impact	After 4 hours pretreatment under temperature -15±2°C, weight 1 kg shot from two meters high above the pipe to the casing at both ends and the middle of the heat shrinkable sleeve. The sealing performance meet the requirements.
9. Vibration	Vibration frequency 10Hz, amplitude 3mm, the two directions perpendicular to the vibration for 72 hours. The sealing performance meet the requirements.
10. Pressure-time test	23±2°C, three groups a 210kpa 3hours b 140kpa 10days c 130kpa 26days. The sealing performance meet the requirements.
11. Resistance to environmental stress cracking	Soaked in 50±2°C Igepalco-630 10% of the solution, holding after 7days. The sealing performance meet the requirements, through normal visual inspection, no cracking.



ACCESSORIES

Cable Tie



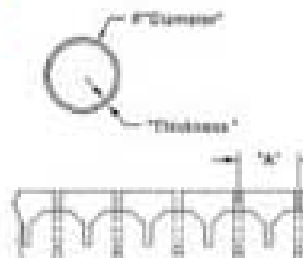
ITEM NO.	L		W	E	BUNDLE DIAMETER MM	TENSILE STRENGTH	
	INCH	MM				MM	LBS
2.5*100	4.0	100	2.5	3-22	18	8	
2.5*150	6.0	150		3-33			
2.5*200	8.0	200		3-50			
3.6*100	4.0	100	3.6	3-22	40	18	
3.6*150	6.0	150		3-33			
3.6*200	8.0	200		3-63			
4.8*100	4.0	100	4.8	4-32	50	22	
4.8*250	10	250		4-63			
4.8*450	18	450		4-118			

Cable Clip

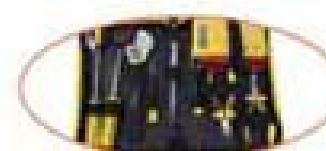


ITEM NO	H(mm)	R(mm)	Nail(mm)
GCL-4mm	5.3	4	1.7*15
GCL-5mm	6.5	5	1.7*15
GCL-6mm	6.1	6	1.7*15
GCL-8mm	9.6	8	1.9*21
GCL-10mm	11.7	10	2.05*25

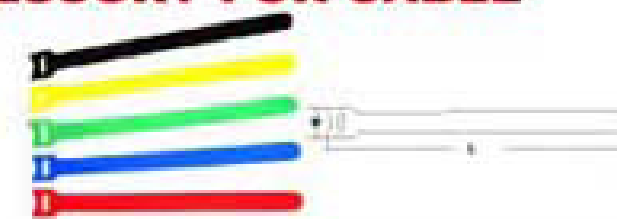
Cable Manager Tube



Part No.	GT-R1033	GT-R1034	GT-R1035	GT-R1036	GT-R1037
Diameter	10mm	16mm	22mm	28mm	34mm
"A"	13mm	14mm	17mm	20mm	23mm
Perimeter	32mm	52mm	70mm	88mm	108mm
Thickness	0.70mm	0.80mm	0.90mm	1.00mm	1.10mm
Material	PE+PA&PP	PE+PA&PP	PE+PA&PP	PE+PA&PP	PE+PA&PP

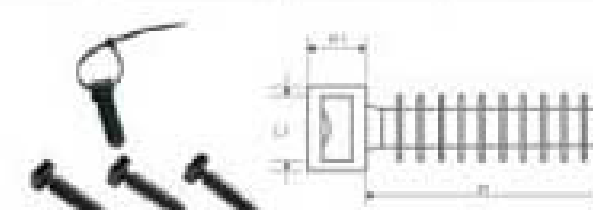


ACCESSORY FOR CABLE



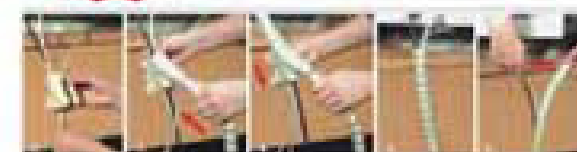
* "W" colour: (B=black, Y=yellow, R=red, BL=blue, GR=green)

Part No.	L(mm)	W(mm)
GT-12*150-#	150	12
GT-12*200-#	200	12
GT-16*200-#	200	16
GT-16*250-#	250	16
GT-16*300-#	300	16
GT-20*200-#	200	20
GT-20*250-#	250	20
GT-20*300-#	300	20



ITEM NO.	GT8-8
H(mm)	37
H1(mm)	6.0
W(mm)	10
L(mm)	12.7
L1(mm)	6.7
PACKING	100PCS

NEW





△ TLAU1SU1S

△ TLAU1PU1S

Part No.	Description
TLAU1SU1S-2	1 US socket to 1 US socket 6P2C
TLAU1SU1S-4	1 US socket to 1 US socket 6P4C
TLAU1PU1S-2	1 US plug to 1 US socket 6P2C
TLAU1PU1S-4	1 US plug to 1 US socket 6P4C
TLAU1SU2S-2	1 US socket to 2 US socket 6P2C



△ TLAU1SU2S

△ TLAU1PU2S

△ TLAU1PU3S

Part No.	Description
TLAU1SU2S-4	1 US socket to 2 US socket 6P4C
TLAU1PU2S-2	1 US plug to 2 US socket 6P2C
TLAU1PU2S-4	1 US plug to 2 US socket 6P4C
TLAU1PU3S-2	1 US plug to 3 US socket 6P2C
TLAU1PU3S-4	1 US plug to 3 US socket 6P4C



△ TLMJB21-4

△ TLMJB22-4

△ TLMJB31-4

Part No.	Description
TLMJB21-2	Modular Jack Box, 1port, 6P2C
TLMJB21-4	Modular Jack Box, 1port, 6P4C
TLMJB22-2	Modular Jack Box, 2port, 6P2C
TLMJB22-4	Modular Jack Box, 2port, 6P4C
TLMJB31-2	Modular Jack Box, 1port, 6P2C
TLMJB31-4	Modular Jack Box, 1port, 6P4C

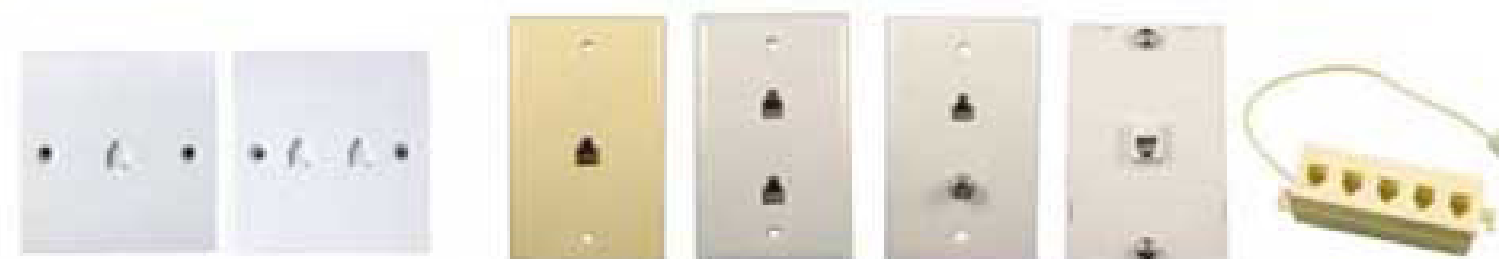


△ TLMJB41-4

△ TLMJB42-4

△ TLMJB11-4

Part No.	Description
TLMJB41-2	Modular Jack Box, 1port, 6P2C
TLMJB41-4	Modular Jack Box, 1port, 6P4C
TLMJB42-2	Modular Jack Box, 2port, 6P2C
TLMJB42-4	Modular Jack Box, 2port, 6P4C
TLMJB11-2	Modular Jack Box, 1port, 6P2C
TLMJB11-4	Modular Jack Box, 1port, 6P4C



△ TLPE81

△ TLPE82

△ TLPA11

△ TLPA12

△ TLPA1V

△ TLPA21

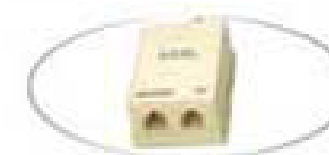
△ TLMJB54

Part No.	Description
TLPE81	1port telephone wall plate, size: 86x86mm
TLPE82	2port telephone wall plate, size: 86x86mm
TLPA11	1port telephone wall plate, size: 114x70mm

Part No.	Description
TLPA12	2port telephone wall plate, size: 114x70mm
TLPA1V	1port telephone/video wall plate, size: 114x70mm
TLPA21	1port telephone wall plate, size: 114x70mm
TLMJB54	1-US plug to 5-US socket telephone adapter



Page 59



Page 60



TEL. COLLECTION



△ TLAE1PU1S △ TLAE1SE1S △ TLAE1PE2S △ TLAE1PE1SU1S △ TLAE1PE3S △ TLAE1PE2SU1S

Part No.	Description
TLAE1PU1S-00	1 UK plug to 1US socket QP0C
TLAE1SE1S-00	1 UK socket to 1 UK socket QP0C
TLAE1PU2S-00	1 UK plug to 2 US socket QP0C
TLAE1PE2S-00	1 UK plug to 2 UK socket QP0C

Part No.	Description
TLAE1PE1SU1S-00	1 UK plug to 1-UK+1-US socket QP0C
TLAE1PE3S-00	1 UK plug to 3 UK socket QP0C
TLAE1PE2SU1S-00	1 UK plug to 2-UK+1-US socket, QP0C
TLAE1PE4S-00	1 UK plug to 4 UK socket, QP0C



△ TLAE1S △ TLAE2S △ TLAE1C △ TLAE1S △ TLAE2S △ TLAE1C

Part No.	Description
TLAE1S-00	1 UK Socket adaptor, QP0C
TLAE2S-00	2 UK Socket adaptor, QP0C
TLAE1C	Cover plate

Part No.	Description
TLAE1S-00	1 UK Socket adaptor, QP0C
TLAE2S	Cover plate



△ TLAE1S △ TLAE2S △ TLAE1S1F △ TLAE1RJ4S △ TLWK32

Part No.	Description
TLAE1S-00	1 UK Socket adaptor, QP0C
TLAE2S-00	1 UK Socket adaptor, QP0C
TLAE1S1F	1 UK Socket + 1-video adaptor, QP0C

Part No.	Description
TLWK31	1 Port Telephone wall plate, 8p8c
TLWK32	2 Port Telephone wall plate, 8p8c
TLAE1RJ4S	1RJ4S socket adaptor, 8p8c



Page 29



Page 3

TEL. COLLECTION



△ TLWK12 △ TLWK11 △ TLWK22 △ TLWK21

Part No.	Description
TLWK11	1 Port Telephone wall plate
TLWK12	2 Port Telephone wall plate

Part No.	Description
TLWK21	1 Port Telephone wall plate
TLWK22	2 Port Telephone wall plate



△ TLADL1 △ TLADL2 △ TLADL3 △ TLADL4 △ TLADL5

Part No.	Description
TLADL1	ADSL Splitter
TLADL2	ADSL Splitter

Part No.	Description
TLADL3	ADSL Splitter
TLADL4	ADSL Splitter
TLADL5	ADSL Splitter



△ TLADL6 △ TLADL7 △ TLADL8 △ TLADL9

Part No.	Description
TLADL6	ADSL Splitter
TLADL7	ADSL Splitter

Part No.	Description
TLADL8	ADSL Splitter
TLADL9	ADSL Splitter



Page 55



Page 75



USB PRODUCTS

USB Cord



■USB 2.0 Version.

■Order Information:

* "#"-Color (B=black; G=gray; R=red; GR=green, T=transparence...).

* "00"-Length (01=1M; 02=2M...10=10M...) . * Molded boot is option as above(1/2/3/4/5/6).

Part No.	Description	Part No.	Description
UC-AMAF-#-00	A male to A female, "#"color, "00"meters.	UC-AMBM-#-00	A male to B male, "#"color, "00"meters.
UC-AMAM-#-00	A male to A male, "#"color, "00"meters.	UC-AM5P-#-00	A male to mini 5P, "#"color, "00"meters.
UC-AFAF-#-00	A female to A female, "#"color, "00"meters.	UC-AM4P-#-00	A male to mini 4P, "#"color, "00"meters.

USB Adaptor



Part No.	Description	Part No.	Description
UA-AMBM	USB adaptor A male - B male	UA-AMAF	USB adaptor A male - A female
UA-AMAM	USB adaptor A male - A male	UA-AFAF2	USB adaptor A female - A female
UA-AFBM	USB adaptor A female - B male	UA-BMBM	USB adaptor B male - B male
UA-AFAF	USB adaptor A female - A female	UA-AFP	USB adaptor A female - mini 5-pin.

HDMI Adaptor



Part No.	Description	Part No.	Description
HDA-AMAF-D1	HDMI adaptor A male - A female, 90°	HDA-AMAF-D1	HDMI adaptor A male - A female, 90°
HDA-AMAF-D2	HDMI adaptor A male - A female, 90°	HDA-AMDF	HDMI adaptor A male - DVI female.
HDA-AFAF-D	HDMI adaptor A female - A female, 90°	HDA-AFDM	HDMI adaptor A female - DVI male.
HDA-AFAF-2	HDMI adaptor A female - A female.	HDA-DMVG	Adaptor DVI male - VGA
HDA-AFAF-1	HDMI adaptor A female - A female.	HDA-DFVG	Adaptor DVI female - VGA
HDA-AMAF	HDMI adaptor A male - A female		



HDMI PRODUCTS

HDMI Cord



■Support HDMI 1.3b.

■High-speed HDMI cable, V.13/1080P.

■Order Information:

* "#"-Color (B=black; G=gray; R=red; GR=green, T=transparence...).

* "00"-Length (01=1M; 02=2M...10=10M...) ; * "F"= with ferris. * Molded boot is option as above.

Part No.	Description	Part No.	Description
HDC-AMAF-(F)-#-00	HDMI Cord A male - A female, "#"color, "00"meters.	HDC-AMDM-(F)-#-00	HDMI Cord A male - DVI male, "#"color, "00"meters.
HDC-AMAM-(F)-#-00	HDMI Cord A male - A male, "#"color, "00"meters.	HDC-AMDF-(F)-#-00	HDMI Cord A male - A female, "#"color, "00"meters.

HDMI Switcher



Part No.	Description	Part No.	Description
HDS-112	HDMI Switcher, 2-in / 1-out	HDS-A13	HDMI Switcher, 3-in/ 1-out.
HDS-1DR	HDMI Switcher, HDMI / DVI / 3RCA	HDS-A15	HDMI Switcher, 5-in/1-out
HDS-214	HDMI Switcher, 4-in/ 1-out	HDS-B12	HDMI Switcher, 2-in/1-out.
HDS-312	HDMI Switcher, 2-in/1-out	HDS-B13	HDMI Switcher, 3-in/1-out.
HDS-313	HDMI Switcher, 3-in/1-out.	HDS-C13	HDMI Switcher, 3-in/1-out.
HDS-314	HDMI Switcher, 4-in/1-out.	HDS-C15	HDMI Switcher, 5-in/1-out

HDMI Face Plate



Part No.	Description	Part No.	Description
HDF-LF	HDMI Face Plate, size: 114x70mm	HL-5	Out-let frame, loaded with 1-HDMI & 2-RJ45 socket & 2-video.
HL-1	Out-let frame, loaded with HDMI, 1port.	HDF-H1	HDMI face plate, 1port, size: 114x70mm.
HL-2	Out-let frame, loaded with HDMI, 2port.	HDF-E1	HDMI face plate, 1port, size: 86X86mm.
HL-3	Out-let frame, loaded with HDMI & audio.	HDF-E2	HDMI face plate, 2port, size: 86X86mm.
HL-4	Out-let frame, loaded with HDMI & video.	HC	Cover of HDMI socket.

